

# Poverty traps and Nonlinear Income Dynamics with Measurement Error and Individual Heterogeneity<sup>#</sup>

Francisca Antman  
*Department of Economics,  
Stanford University*

David McKenzie\*  
*Development Research Group,  
The World Bank*

## Abstract

*Theories of poverty traps stand in sharp contrast to the view that anybody can make it through hard work and thrift. However, empirical detection of poverty traps is complicated by the lack of long panels, measurement error, and attrition. This paper shows how dynamic pseudo-panel methods can overcome these difficulties, allowing estimation of non-linear income dynamics and testing of the presence of poverty traps. The paper explicitly allows for heterogeneity in income dynamics, to account for the possibility that particular groups of individuals may face traps, even if the average individual does not. These methods are used to examine the evidence for a poverty trap in labor earnings, income, and expenditure in urban Mexico and are compared to panel data estimates from a short rotating panel. The results do find evidence of nonlinearities in household income dynamics, and demonstrate large bias in the panel data estimates. Nevertheless, even after allowing for heterogeneity and accounting for measurement error, we find no evidence for the existence of a poverty trap for any group in our sample.*

*JEL classification:* O12, D31, C81

*Keywords:* nonlinear income dynamics, poverty traps, dynamic pseudo panel; measurement error.

## **1. Introduction**

Does poverty beget poverty? The notion of a poverty trap, whereby current poverty is a direct cause of poverty in the future, provides a powerful explanation for the persistence of poverty and a rationale for numerous policy interventions. The theoretical literature has provided several plausible models which can give rise to poverty traps.<sup>1</sup> A common feature of many theories of a poverty trap at the micro-level is the combination of borrowing constraints and an indivisible investment, leading to the existence of a critical threshold in assets, income, or expenditure, which a household is unable to surpass if forced below it. Examples include individuals who are too poor to purchase the minimum level of nutrients needed for productive work (Dasgupta and Ray, 1986), obtain a lumpy amount of education (Galor and Zeira, 1993), or buy physical capital needed for entrepreneurship (Banerjee and Newman, 1993). Even with convex technology, Mookherjee and Ray (2002) show that when employers or lenders have all the bargaining power in contracts with workers or borrowers, contractual distortions resulting from moral hazard can also give rise to poverty traps.<sup>2</sup>

A sharp contrast to the poverty trap view of the world is the idea that "anybody can make it" through hard work and thrift, which Ghatak, Morelli and Sjostrom (2001) term the American Dream effect. In their model, capital market imperfections may actually improve social welfare by providing incentives to work hard while young, in order to enjoy rents in old age. Bowles, Durlauf and Hoff (2004, p.1) summarize this view as saying that "initial poverty typically does not entrap; only those who don't make the effort remain in its clutches".

Despite the striking differences in policy implications, the empirical literature has found it hard to adjudicate between these two worldviews. One strand of the empirical literature has attempted to test particular theories of poverty traps. For example, Strauss and Thomas (1998) review studies which look for nonlinear relationships between health and productivity, and McKenzie and Woodruff (2003) test for non-convexities in returns to microenterprise investment. These studies generally have not found support for poverty traps caused by the particular mechanism being studied<sup>3</sup>, but leave open the question of whether poverty traps may still arise due to the non-studied processes.

A second strand of recent literature has therefore attempted to look directly at the dynamics of income, expenditure, or assets in order to test for non-convexities and poverty traps. Lokshin and Ravallion (2004) use a six-year panel from Hungary and four-year panel from Russia to carry out nonlinear estimation of the relationship between current and lagged income. Almost one half of their sample has attrited by the end of the panel, and so they use a systems estimator which explicitly models attrition as a function of initial observed characteristics of the household. They do find the mapping from lagged income to current income to be nonlinear, but find no evidence of low-level threshold effects which would be associated with poverty traps. Jalan and Ravallion (2004) obtain similar findings using a six-year panel of income from four provinces in China.

Carter and Barrett (2005) criticize the use of use of short panels of income or expenditure to test for poverty traps by claiming that they are unable to distinguish between structural poverty and short-term transitory movements into and out of poverty.<sup>4</sup> This can be exacerbated by measurement error, which can lead a household to be mis-classified as poor as one period and correctly classified as non-poor in the next. They further note that many theories of poverty traps are based on an asset threshold, and propose study of the dynamics of asset poverty. Such an approach is followed by Lybbert et al. (2004), who use 17 years of retrospective livestock history to examine wealth dynamics in southern Ethiopia, finding some support for a poverty trap in livestock wealth. Recent papers by Barrett et al. (2005) and Adato, Carter and May (2005) also employ this asset-based approach and find evidence of poverty traps in Kenya, Madagascar and South Africa.

These asset-based approaches appear to work well in rural settings where one well-measured major asset, such as cattle, is the main source of income. However, this approach identifies what Barrett et al. (2005) refer to as the dynamics of structural income, which is the part of income which is predictable from the assets used. This relies on any measurement error in income being uncorrelated with levels of assets, which may not be a reasonable assumption if assets are also measured with error, or if measurement errors differ for the poor and rich.<sup>5</sup> Furthermore, if the set of assets available for measurement is small (as in many urban contexts) or income shocks are persistent, the dynamics of the component of income which is predictable from assets may differ greatly from the dynamics of true income.

This paper proposes a dynamic pseudo-panel approach to the estimation of nonlinear income dynamics and uses this method to test for the presence of poverty traps in urban Mexican income and expenditure.<sup>6</sup> The use of pseudo-panels can greatly mitigate the three major data issues facing the empirical study of poverty traps: a lack of long panels, attrition, and measurement error. A pseudo-panel tracks cohorts of individuals over repeated cross-sectional surveys (Deaton, 1985). Since such surveys are often available over longer time-periods than genuine panels, this approach can allow for the study of longer-term dynamics than is usually possible with panels. The Mexican Urban Labor Force Survey (ENEU) used here is a quarterly rotating panel available from 1987-2001. This enables us to use 58 quarters of data in the pseudo-panel estimation, compared to panels of only 5 quarters. Non-random attrition is much less of a problem in pseudo-panels than in panels since a new sample of households is drawn in each period.

We employ the functional form of Lokshin and Ravallion (2004), in modeling income as a polynomial of lagged income. We show that measurement error does not affect the pseudo-panel estimates of the slope coefficients in this polynomial, enabling one to determine whether or not the income mapping is non-convex. However, the second and higher-order moments of the measurement error will have an effect on the intercept term in this polynomial, and we derive a correction factor for this term.

A further innovation in our approach is to explicitly allow for heterogeneity in modeling income dynamics and testing for poverty traps. This enables us to allow the data generating process to contain an individual-specific effect, and to determine whether

there are particular groups of individuals who face traps, even if the average individual in society does not.<sup>7</sup> For example, an individual with higher ability or with a better intrinsic health endowment may be able to produce more than an individual with the same lagged income who has lower ability or intrinsic health. Figure 1 illustrates this case, plotting three non-convex curves mapping lagged income to current income. Individuals depicted by Curve A have non-linear income dynamics, but do not face a poverty trap as the curve lies entirely above the 45 degree line. Individuals with income dynamics following Curve C are in an extreme case of a poverty trap, where income converges to zero. Curve B is the classic poverty trap case, where there is a threshold level of income,  $Y_u$ , below which individuals are in a trap. Allowance for individual heterogeneity enables us to check whether some individuals are in case B or C, even if the average individual has dynamics given by Curve A.<sup>8</sup>

We begin by checking for the presence of poverty traps with short panels of household labor income. No individuals are found to have income dynamics which would lead to a poverty trap, and indeed the results indicate high mobility of incomes. However, such high mobility is likely to be the result of measurement error, and we proceed to pseudo-panel estimation. The pseudo-panel estimates do indeed show a greater influence for past income on current income than the panel data results. However, although the nonlinear lagged income terms are statistically significant, they are small in magnitude, and the income mapping is close to linear over the fitted income range. While measurement error appears to have large effects on estimation of the slope coefficients in this mapping, correcting for the influence of higher order moments of the measurement error on the

intercept term only marginally changes the estimated income mapping. Based on this pseudo-panel estimation, we check whether the income dynamics for the average individual in any of our cohorts give rise to a poverty trap and find they do not. Thus, while labor income mobility is low in urban Mexico, there is no evidence for a poverty trap in income. These results continue to hold once we allow for slope parameter heterogeneity across education groups, and when we estimate dynamics for full household income and expenditure using an alternative data set.

The remainder of the paper is organized as follows: Section 2 describes the econometric method used to estimate nonlinear income dynamics and detect poverty traps with panels and pseudo-panels; Section 3 describes the ENEU data; Section 4 provides the results; Section 5 examines the robustness of our results to different functional forms and to the use of alternative measures of household resources than labor earnings; and Section 6 concludes.

## **2. Econometric Method**

### **2.1 Panel Data without Measurement Error**

We follow Jalan and Ravallion (2004) and Lokshin and Ravallion (2004) in allowing for non-linear income dynamics in the form of a cubic function of the lagged dependent variable, and in allowing for individual heterogeneity through the inclusion of unobserved individual effects,  $\alpha_i$ . We discuss below extension to higher-order polynomials. The data generating process for the true income  $Y_{i,t}^*$  of household  $i$  in time period  $t$  is assumed to be:

$$Y_{i,t}^* = \beta_1 Y_{i,t-1}^* + \beta_2 (Y_{i,t-1}^*)^2 + \beta_3 (Y_{i,t-1}^*)^3 + \alpha_i + u_{i,t} \quad (1)$$

If the true values of income are observed and the  $u_{i,t}$  are serially uncorrelated, then equation (1) can be estimated via the GMM method of Arellano and Bond (1991). This is the method used by Jalan and Ravallion (2004), who difference (1) and then use  $Y_{i,t-2}^*$ ,  $(Y_{i,t-2}^*)^2$  and  $(Y_{i,t-2}^*)^3$  as instruments for  $\Delta Y_{i,t-1}^*$ ,  $\Delta(Y_{i,t-1}^*)^2$  and  $\Delta(Y_{i,t-1}^*)^3$ .

With no measurement error in income, one can then obtain consistent estimates  $\hat{\beta}_1$ ,  $\hat{\beta}_2$  and  $\hat{\beta}_3$ . These parameter estimates enable us to determine whether there is a non-convexity in the income mapping, but are not in themselves sufficient to determine whether or not individuals face a poverty trap. If the income mapping always lies above the 45 degree line, then a non-convex income mapping results in different rates of income growth at different levels of income, but in no poverty trap. Curve A in Figure 1 illustrates this possibility. For a poverty trap to exist, it must be either the case that the income mapping always lies below the 45 degree line (as in Curve C), that the income mapping crosses the 45 degree line from below (Curve B), or that the equilibrium crossing point is at a low level of income below the poverty line (Curve D).

For a given income mapping  $Y_{i,t}^* = g(Y_{i,t-1}^*)$ , we can then see that a necessary and sufficient condition for a threshold-based poverty trap of the type given by Curve B in Figure 1 is that

$$g_i'(Y_{i,t-1}^*) \Big|_{Y_{i,t}^* = Y_{i,t-1}^*} > 1 \quad (2)$$



Note that the function  $g$  depends on  $i$  due to the presence of the individual effects  $\alpha_i$ .

Based on equation (1) and the parameter estimates  $\hat{\beta}_1$ ,  $\hat{\beta}_2$  and  $\hat{\beta}_3$ , we estimate  $\alpha_i$  by

$$\hat{\alpha}_i = \bar{Y}_i - \hat{\beta}_1 \bar{Y}_{i,-1} - \hat{\beta}_2 \bar{Y}_{i,-1}^2 - \hat{\beta}_3 \bar{Y}_{i,-1}^3 \quad (3)$$

where

$$\bar{Y}_i = \frac{1}{T-1} \sum_{t=2}^T Y_{i,t}^*, \text{ and}$$

$$\bar{Y}_{i,-1}^s = \frac{1}{T-1} \sum_{t=1}^{T-1} (Y_{i,t}^*)^s \text{ for } s=1,2,3$$

Then for our cubic specification, the condition in (2) amounts to evaluating whether

$$\hat{\beta}_1 + 2\hat{\beta}_2 Y_{i,t-1}^* + 3\hat{\beta}_3 (Y_{i,t-1}^*)^2 > 1 \quad (4)$$

evaluated at the  $Y_{i,t-1}^*$  for which  $Y_{i,t}^* = Y_{i,t-1}^*$ . i.e. at all fixed points of the estimated mapping  $g_i(\cdot)$ . There may be particular periods when this occurs due to a large shock,  $u_{i,t}$ , but we want to know if this occurs for the expected  $u_{i,t}$  of zero. So we need to evaluate equation (4) at the  $Y_{i,t}^*$  which solves:

$$Y_{i,t}^* = \hat{\beta}_1 Y_{i,t}^* + \hat{\beta}_2 (Y_{i,t}^*)^2 + \hat{\beta}_3 (Y_{i,t}^*)^3 + \hat{\alpha}_i \quad (5)$$

Equation (5) can then be solved to obtain the crossing point(s)  $Y_{i,t}^*$  of each individual's income mapping. The condition in equation (4) can then be evaluated for each individual at their specific crossing point(s) to determine whether any individuals are estimated to face a threshold-based poverty trap of the sort given by Curve B. We can also check if the income level of the crossing point is below the poverty line, giving rise to a low-level

equilibrium trap like Curve D in Figure 1. As discussed in the introduction, allowing for individual heterogeneity in a number of the theoretical models of poverty traps may result in some individuals facing traps and not others, and this methodology allows us to incorporate this possibility. In addition, one can determine whether the average individual income dynamics give rise to a poverty trap by evaluating (4) at the crossing point determined by the average  $\alpha_i$ .

## 2.2 Panel Data with Measurement Error

In practice one does not observe the true income measure  $Y_{i,t}^*$  but rather observes  $Y_{i,t}$  whereby:

$$Y_{i,t} = Y_{i,t}^* + \varepsilon_{i,t} \quad (6)$$

Here the measurement error  $\varepsilon_{i,t}$  is assumed to be mean zero and independently distributed across individuals with  $E(\varepsilon_{i,t}^2) = \sigma_\varepsilon^2$ . The data generating process of the observed data is then:

$$Y_{i,t} = \beta_1 Y_{i,t-1} + \beta_2 (Y_{i,t-1})^2 + \beta_3 (Y_{i,t-1})^3 + \alpha_i + \eta_{i,t} \quad (7)$$

where

$$\eta_{i,t} = u_{i,t} + \varepsilon_{i,t} - (\beta_1 + 2\beta_2 Y_{i,t-1} + 3\beta_3 Y_{i,t-1}^2) \varepsilon_{i,t-1} + (\beta_2 + 3\beta_3 Y_{i,t-1}) \varepsilon_{i,t-1}^2 - \beta_3 \varepsilon_{i,t-1}^3 \quad (8)$$

As is well known, in the linear regression model with no individual heterogeneity, if the measurement errors are serially uncorrelated, the OLS estimate of  $\beta_1$  will be biased towards zero, leading one to conclude that there is less persistence in the income process than is truly the case. The Arellano-Bond instrumental variable approach will also be inconsistent with measurement error except in special cases. In the linear model, if there

is no autocorrelation in the measurement error, using  $Y_{i,t-3}$  in place of  $Y_{i,t-2}$  as an instrument will give consistency.<sup>9</sup> However, in the quadratic and cubic cases earlier lags will still result in inconsistency, and even in the linear case, autocorrelation in the measurement error will rule out the use of earlier lags as instruments. Data from validation studies on income in the U.S. does indeed suggest positive autocorrelation in the measurement error (Bound and Krueger, 1991). As a result, in the presence of measurement error, these panel data estimates will be inconsistent and therefore not enable one to determine whether there are non-convexities in the income mapping or to detect the presence of poverty traps.

### 2.3 Estimation of non-linear income dynamics with pseudo-panels

We propose using pseudo-panel methods to consistently estimate the income mapping. A pseudo-panel tracks cohorts of individuals over repeated cross-sectional surveys. Moffitt (1993), Collado (1997), McKenzie (2004) and Verbeek and Vella (forthcoming) discuss conditions under which one can consistently estimate linear dynamic models with pseudo-panels. Our aim here is to show that these methods can also deal with the measurement error problems facing panel data models, and to provide details for the estimation of non-linear income dynamics.

Begin by taking cohort averages of equation (7) over the  $n_c$  individuals observed in cohort  $c$  at time  $t$ :

$$\bar{Y}_{c(t),t} = \beta_1 \bar{Y}_{c(t),t-1} + \beta_2 \left( \frac{1}{n_c} \sum_{i=1}^{n_c} Y_{i(t),t-1}^2 \right) + \beta_3 \left( \frac{1}{n_c} \sum_{i=1}^{n_c} Y_{i(t),t-1}^3 \right) + \alpha_{c(t)} + \bar{\eta}_{c(t),t} \quad (9)$$

where  $\bar{Y}_{c(t),t} = (1/n_c) \sum_{i=1}^{n_c} Y_{i(t),t}$  denotes the sample mean of  $Y$  over the individuals in cohort  $c$  observed at time  $t$ . With repeated cross-sections, different individuals are observed each time period. As a result, the lagged mean  $\bar{Y}_{c(t),t-1}$  representing the mean income in period  $t-1$  of the individuals in cohort  $c$  observed at time  $t$ , (denoted here  $c(t)$ ) is not observed. Likewise the mean of the lagged square and mean of the lagged cubic are also unobserved. Therefore we replace the unobserved terms with the sample means over the individuals who are observed at time  $t-1$ , leading to the following regression for cohorts  $c=1,2,\dots,C$  and time periods  $t=2,\dots,T$ :

$$\bar{Y}_{c(t),t} = \beta_1 \bar{Y}_{c(t-1),t-1} + \beta_2 \left( \frac{1}{n_c} \sum_{i=1}^{n_c} Y_{i(t-1),t-1}^2 \right) + \beta_3 \left( \frac{1}{n_c} \sum_{i=1}^{n_c} Y_{i(t-1),t-1}^3 \right) + \alpha_{c(t)} + \bar{\eta}_{c(t),t} + \bar{\lambda}_{c(t),t} \quad (10)$$

where

$$\begin{aligned} \lambda_{c(t),t} = & \beta_1 (\bar{Y}_{c(t),t-1} - \bar{Y}_{c(t-1),t-1}) + \beta_2 \frac{1}{n_c} \left( \sum_{i=1}^{n_c} Y_{i(t),t-1}^2 - \sum_{i=1}^{n_c} Y_{i(t-1),t-1}^2 \right) \\ & + \beta_3 \frac{1}{n_c} \left( \sum_{i=1}^{n_c} Y_{i(t),t-1}^3 - \sum_{i=1}^{n_c} Y_{i(t-1),t-1}^3 \right) \end{aligned} \quad (11)$$

As shown in the general model of McKenzie (2004), as the number of individuals in each cohort becomes large,  $\lambda_{c(t),t}$  converges to zero. This requires that  $\bar{Y}_{c(t),t-1}$  and  $\bar{Y}_{c(t-1),t-1}$  converge to the same mean as the same size gets large. If the survey design changes from one period to another, this assumption may not hold, inducing an additional type of measurement error in the data. This is not a concern in our application, and hence we will ignore the  $\lambda_{c(t),t}$  term in what follows.

Let us first consider the case of linear dynamics, setting  $\beta_2$  and  $\beta_3$  to zero. Then equation (10) becomes:

$$\bar{Y}_{c(t),t} = \beta_1 \bar{Y}_{c(t-1),t-1} + \alpha_{c(t)} + \bar{u}_{c(t),t} + \bar{\varepsilon}_{c(t),t} - \beta_1 \bar{\varepsilon}_{c(t),t-1} \quad (12)$$

We have that as the number of individuals in each cohort gets large,  $n_c \rightarrow \infty$ ,

$$\bar{\varepsilon}_{c(t),t} = \frac{1}{n_c} \sum_{i=1}^{n_c} \varepsilon_{i(t),t} \xrightarrow{p} E(\varepsilon_{i(t),t}) = 0$$

That is, since the construction of the pseudo-panel involves averaging over the observations in a cohort, we average out the individual measurement errors. As a result, with sufficient observations per cohort, the measurement errors do not affect the consistency of estimates from equation (12). The parameter  $\beta_1$  and the cohort-specific effects  $\alpha_c$  can then be estimated via OLS on the cohort average equation (12). This will be consistent as the number of individuals per cohort gets large.<sup>10</sup>

In the more general case of non-linear income dynamics, OLS estimation of the cohort average equation (10) will still lead to consistent estimates of  $\beta_1$ ,  $\beta_2$  and  $\beta_3$ , allowing one to determine if there are non-convexities in the income dynamics. However, the OLS estimates of the cohort-specific effects  $\alpha_c$  will be biased. To correct for this bias we need to impose further restrictions on the form of the measurement error. In particular, we assume that:

- i) The measurement errors are symmetric, so that  $E(\varepsilon_{i,t}^3) = 0$
- ii) The measurement errors are stationary, so that  $E(\varepsilon_{i,t}^2) = \sigma_\varepsilon^2$  is constant over time. We can allow the variance of the measurement errors to differ across cohorts.

iii) The measurement errors are independent of the true values within a cohort, so  $\varepsilon_{i,t}$  is independent of  $Y_{i,t}^*$  for all  $i$  in a given cohort  $c$ .

Under these assumptions, based on equations (7) and (8), one can easily show that as  $n_c \rightarrow \infty$ , the OLS estimate of  $\alpha_c$ ,  $\hat{\alpha}_c$  converges as follows:

$$\hat{\alpha}_c \xrightarrow{p} \alpha_c - \beta_2 \sigma_\varepsilon^2 - 3\beta_3 E_c(Y_{i,t-1}^*) \sigma_\varepsilon^2 \quad (13)$$

where  $E_c(Y_{i,t-1}^*)$  is the cross-sectional mean in income for individuals in cohort  $c$  at time  $t-1$ . Under assumptions (ii) and (iii) we have that the cross-sectional variance of income is:

$$\text{Var}(Y_{i,t}) = \text{Var}(Y_{i,t}^*) + \sigma_\varepsilon^2 \quad (14)$$

Rearranging then gives:

$$\sigma_\varepsilon^2 = \text{Var}(Y_{i,t}) \left[ 1 - \frac{\text{Var}(Y_{i,t}^*)}{\text{Var}(Y_{i,t})} \right] \quad (15)$$

Equation (15) can then be used to obtain an estimate,  $\hat{\sigma}_\varepsilon^2$  of  $\sigma_\varepsilon^2$  based on the sample cross-sectional variance of observed incomes, and on an estimate of  $\theta = \text{Var}(Y_{i,t}^*) / \text{Var}(Y_{i,t})$ . Proxies for this reliability ratio can be obtained from validation studies. We calculate  $\hat{\sigma}_\varepsilon^2$  for two different values of  $\theta$ , 0.5 and 0.8, which span the main range of estimates found in U.S. validation studies (see Bound, Brown and Mathiowetz, 2001). Under the assumption that the measurement error is mean zero, we can then

estimate  $E_c(Y_{i,t-1}^*)$  with the sample cross-sectional mean  $\bar{Y}_{c(t-1),t-1}$  and therefore estimate  $\alpha_c$  by:

$$\tilde{\alpha}_c = \hat{\alpha}_c + \hat{\beta}_2 \hat{\sigma}_\varepsilon^2 + 3\hat{\beta}_3 \bar{Y}_{c(t-1),t-1} \hat{\sigma}_\varepsilon^2 \quad (16)$$

Under assumptions (i)-(iii), as the number of individuals in each cohort goes to infinity,  $\hat{\alpha}_c$  will provide a consistent estimate of the cohort effect  $\alpha_c$ .

Based on these estimates, one can then go back to equations (4) and (5) at the cohort mean level, in order to determine whether any specific cohort faces a poverty trap by determining if the slope of the estimated cubic income mapping at the income level(s) at which the 45 degree line is crossed is greater than one. Observe that the data generating process still allows for heterogeneity at the level of the individual, and hence the shape of the income mapping is estimated under this assumption. However, the intercept of the mapping is only obtained for each cohort, and therefore our test for poverty traps only applies for the average individual within each cohort.

Note that at no stage did we impose any restrictions on the serial correlation properties of the measurement error. Since different individuals are observed in each time period, we can allow for arbitrary patterns of correlation over time in the measurement errors provided that we assume cross-sectional independence of the measurement errors across individuals.<sup>11</sup>

It is well-known that low-order global polynomial approximations can be unstable if the underlying function is highly nonlinear. In the application in this paper it turns out that

the income generating process does appear close to linear over the observed range, so this is less of a concern here. However, studies of poverty traps in poor rural areas such as Lybbert et al. (2004) and Barrett et al. (2005) have used non-parametric methods with panel data and have found more sharply changing nonlinearities in their applications. The methods presented here will still give consistent estimates of the slope parameters  $\beta$  when applied to higher-order global polynomials or fourier series approximations to more highly non-linear functions. However, correcting the intercept of such extensions will require imposing more structure on the distribution of the measurement error term in order to estimate  $\alpha_c$ . For example, with a quartic, the correction requires an estimate of the fourth moment of the measurement error, along with an estimate of the cross-sectional variance of true income.

In practice this methodology offers several advantages over using genuine panel data. In many situations genuine panel data are not available, or are available for only short periods, whereas much larger samples over longer periods of time are available with cross-sectional surveys. Secondly, an important issue with the examination of income dynamics with genuine panel data is the extent to which non-random attrition biases the results. In particular, one may be concerned that individuals whose incomes suffer large falls or large increases may be much more likely to move houses and leave the sample. While there are structural approaches one can take to attempt to account for attrition (e.g. see Lokshin and Ravallion (2004)), the use of pseudo-panel data is not subject to these same attrition issues. Thirdly, the use of different individuals each period allows for very general forms of serial correlation in the individual measurement errors. The main



disadvantage of the use of pseudo-panels instead of genuine panels for the purpose of identifying poverty traps is that while we can still allow for heterogeneity of the intercept at the individual level, we can only evaluate the condition in equation (4) for each cohort at the crossing point(s) determined by the cohort average intercept, rather than at a separate intercept for each individual. This enables us to determine whether the income dynamics of the average individual within a particular cohort give rise to a poverty trap.

### **3. Data**

The data come from Mexico's Encuesta Nacional de Empleo Urbano (ENEU), a quarterly urban employment survey collected by Mexico's Instituto Nacional de Estadística, Geografía e Informática (INEGI) over the period from the first quarter of 1987 to the second quarter of 2001.<sup>12</sup> Over this period the ENEU expanded coverage from 16 cities in 1987 to 34 cities by the end of 1992 and 44 cities by the second quarter of 2001. We include all 39 cities present by the end of 1994, although our results are robust to restricting the sample to just the 16 cities present in all years. The survey is designed as a rotating panel, with households followed for five consecutive quarters. In addition to information on household demographics and education of all members, each individual aged 12 and above in the household is asked detailed questions about employment and labor income. As is common in many such surveys, the survey tracks a dwelling unit, so that individuals which move houses attrit from the panel.

We examine income dynamics at the household level and test whether poverty traps exist for households. The ENEU only collects data on labor earnings for each household

member in their principal occupation. We add this over household members and deflate by the Consumer Price Index for the relevant quarter from the Bank of Mexico to obtain real household labor earnings. To focus only on households for whom labor earnings are likely to be a main source of income, we restrict our sample to households with heads aged 25 to 49 years old. On average two percent of the observations have household labor income of zero. Using data from Mexico's National Income and Expenditure Survey, the Encuesta Nacional de Ingresos y Gastos de los Hogares (ENIGH), which does include non-labor sources of income, we calculate that labor income represents 95 percent of total monetary income for urban households with heads in the 25-49 year old age range. In Section 5 we examine the robustness of our results to using full income and expenditure from the ENIGH.

After imposing these restrictions on the age of the household head and dropping missing values, we have 54 five-quarter panels, beginning with the panel of 3,930 households which were sampled from the first quarter of 1987 through to the first quarter of 1988, and ending with the panel of 11,158 households sampled from the second quarter of 2000 through to the second quarter of 2001. This gives a total sample of 402,052 households. Ten percent of households are observed for only one quarter, while approximately 65 percent can be followed for all five quarters. For our panel data analysis we use unbalanced panels, resulting in 1,671,530 household-quarter observations in all.

Pseudo-panels are constructed on the basis of five year birth intervals of the household head interacted with three education levels (primary schooling or less, 7 to 12 years

education, and more than 12 years education).<sup>13</sup> For example, all household heads born between 1960 and 1964 with primary schooling or less would form one cohort. The household head is defined as the person recognized as the head by the other household members and is generally male. A potential concern with the panel data is that households who fall into or escape out of poverty may be the most likely to move, and therefore attrit from the panel. In order to ensure that the pseudo-panel does not suffer from the same problem, we construct our pseudo-panel using only the households who are in their first wave of the interview.<sup>14</sup> As a result, we use just over 20 percent of the households available in any given cross-section, since the remaining households are those which are being re-interviewed. We restrict the sample further to cohorts with more than 100 observations in a given wave in order to be able to apply the asymptotic theory developed above which relies on a large number of observations per cohort. Approximately 9 percent of cohort-period observations have fewer than 100 households, and including these additional observations does not qualitatively affect our results. After these restrictions, we are left with a pseudo-panel over 58 quarters with 832 cohort-quarter observations.

The Mexican technical committee on poverty measurement (CTMP 2002) defined the nutritional poverty line for urban Mexico as 652.57 pesos per person per month. We converted this from August 2000 pesos to July 2002 pesos and multiplied by the household size to get a household poverty line for each family, and an average poverty line for each cohort: for the average household size of 4.6 this gives a poverty line of 3351 pesos. Based on this measure, on average over the sample period 31.8 percent of

our sample were below the poverty line. Note that we are only measuring labor income, and so households which have labor income below this line may still have total income above this line after transfers and other sources of income.

## **4. Results**

### **4.1. Panel Data**

In order to get a sense of the relationship between income and lagged income over time, we begin with a locally weighted regression between household income and the quarterly lag of household income in the panel.<sup>15</sup> Figure 2 shows the estimated relationship. The income mapping is an increasing function of lagged income, with the curve intersecting the 45 degree line only once, from above. Therefore, equation (2) does not hold, as the derivative of the curve is clearly less than unity at the intersection point, and the crossing point is well above the poverty line. Thus there is no evidence of a poverty trap.

However, as argued above, it is important to take individual heterogeneity into account. With panel data this is done using the Arellano-Bond (1991) instrumental variables specification. This differences the data and uses lagged income as an instrument for the first difference of lagged income. The first row of Table 1 reports the slope parameter estimates. Although the quadratic and cubic terms are significant, they are small in magnitude, and with almost 800,000 observations, statistical significance is not hard to achieve. The degree of curvature implied by these coefficients can be more easily seen graphically, and so Figure 3 plots the fitted curves for the average individual effect. The cubic and quadratic curves are highly linear in shape, and all three curves show almost no

relationship between current income and lagged income, after conditioning on individual effects.<sup>16</sup>

In Table 2 we then examine whether equation (2) holds for particular individuals, even if it doesn't hold for the average individual. For each of the linear, quadratic, and cubic specifications, we use equation (3) to estimate  $\alpha_i$  for each individual, and then following equations (4) and (5), we evaluate the derivative of the estimated curve for each individual at the income level(s) where the curve crosses the 45 degree line. For the linear model there is only one crossing point, the quadratic model is evaluated at the two roots, and the cubic at the three roots. We report the derivative and its confidence interval at the minimum, 25th, 50th, 75th, and maximum values of the distribution of estimated crossing points.

Within the observed range of positive incomes, all three panel data specifications show a derivative at the crossing point which is very close to zero. This certainly does not provide support for a threshold-based poverty trap, but instead shows a very fast rate of conditional convergence of incomes. Nevertheless, the crossing points for approximately 25 percent of individuals are below the poverty line, suggesting a low-level equilibrium poverty trap. However, given the problems of measurement error and attrition, these panel data estimates will be biased and we therefore proceed to pseudo-panel estimation.

#### **4.2. Pseudo-Panel Results with Quarterly Intervals**

Row 2 of Table 1 reports the pseudo-panel coefficient estimates when we assume a common intercept for all individuals, while Row 3 reports the coefficient estimates when cohort-specific intercepts are included. Again the quadratic and cubic terms are statistically significant, providing evidence of nonlinearities in the income dynamics, but small in size. The confidence intervals for the linear terms do not overlap between the models with and without cohort-specific intercepts. Figure 4 plots the quadratic estimates, and illustrates the importance of allowing for this heterogeneity in the dynamics. The curve for the quadratic model when we assume a common intercept for all cohorts lies right on top of the 45 degree line, suggesting a one-to-one relationship between income and lagged income. However, once we allow for heterogeneity in the intercepts, the slope of the curve flattens. Plotting the curve for the average cohort intercept, we see that the curve crosses the 45 degree line from above, so again there is no poverty trap for the average cohort. Table 3 shows that when we examine this derivative across the distribution of cohort intercepts, the point estimates range from 0.774 to 0.790, and the confidence intervals never contain one.

Figure 5 graphically compares the panel and pseudo-panel estimates of the cubic dynamic model, plotted at the average of the estimated cohort-specific intercepts.<sup>17</sup> A second pseudo-panel curve is plotted after making the correction for the impact of higher order moments of the measurement error on the estimated cohort intercepts, using the procedure outlined in equations (15) and (16) assuming a reliability ratio of 0.5. The pseudo-panel curves are steeper than the panel curves, suggesting that measurement error is causing one to overestimate the degree of mobility in panels, and make one less likely

to detect poverty traps. However, the correction for the impact of higher-order moments of the measurement error has little visual impact, which is likely to be a result of the estimated curves being close to linear over the range of observed data.

The second and third parts of Table 3 compare the estimated derivatives of the quadratic and cubic model with and without this correction for the higher-order moment impacts of measurement error. Results are presented for reliability ratios of 0.5 and 0.8. As with the genuine panel model, the pseudo-panel quadratic model only crosses the 45 degree line once in the range of positive incomes.<sup>18</sup> The estimated derivative at the crossing point ranges from 0.774 to 0.790 without the additional measurement error correction. Making this correction only results in changes of 0.001 or less in the estimated derivatives.

The cubic model again has two positive roots, with one root having a large derivative but being at high levels of income beyond the range observed in the data. The derivative at the crossing point within the range of observed income levels ranges from 0.796 to 0.902 without the additional measurement error correction, and from 0.793 to 0.900 with this correction. The derivatives therefore do vary, and the confidence intervals do not all overlap, showing the importance of allowing for heterogeneity. The derivatives are also higher than the linear model derivative of 0.730, showing some evidence for non-linearities in income dynamics. Nevertheless, all of the derivatives at the crossing points are significantly less than unity. Moreover, Table 3 shows that the level of income at the crossing point is above the poverty line for all cohorts, so these stable equilibrium are also not poverty traps.

Equation (1) aims to measure the dynamics of income, regardless of changes. In common with many developing countries, Mexico experienced large changes at the macroeconomic level during the sample period, including oil price shocks, financial crises, and changing terms of trade. Such factors are important for our ability to detect poverty traps, since they cause large movements across the income distribution. For this reason we do not include time effects in our base specifications. However, as seen in row 4 of Table 1, the inclusion of these effects has the effect of flattening the estimated income mapping, reducing the derivatives. Thus allowing for period effects makes it less likely that there is a poverty-trap in the de-trended income dynamics.<sup>19</sup>

### **4.3. Pseudo-Panel Estimates over Longer Intervals**

One of the advantages of the pseudo-panel approach is that it enables study of income dynamics over longer intervals than is possible with the short panel offered by the ENEU. Table 4 therefore reports the coefficients from the cubic model for different lag lengths in the dynamic estimation. The first row repeats the quarterly interval estimates from Table 1, while the second, third and fourth rows allow for lags of one, two and five years. We see that as the lag interval increases, the derivatives become smaller in size, reflecting greater mobility over longer intervals. Since this estimation includes cohort fixed effects, these estimates should be interpreted as showing conditional convergence of incomes over time, and again, do not show threshold-based poverty traps. The crossing point solutions are still all above the nutritional poverty line, again showing no low-equilibrium traps.



Overall the results in this Section therefore show that the panel data estimates appear to greatly understate the slopes of the income dynamic curves at the crossing points, thereby making it unlikely that they will detect derivatives greater than one, and hence poverty traps. Nevertheless, although the pseudo-panel estimates show less mobility in incomes, they do not provide any evidence of poverty traps in income: all of the derivatives are less than unity and the crossing points above the poverty line. While the quadratic and cubic terms are statistically significant in the pseudo-panel model, providing evidence for non-linear income dynamics, these non-linearities are not very large in magnitude over the observed income range, and do not give rise to poverty traps.

## **5. Robustness**

### **5.1. Higher Order Parametric Terms**

The cubic specification used in this paper and in Lokshin and Ravallion (2004) allows for at most one unstable and two stable dynamic equilibria. While the estimated income dynamics appear highly linear over the income range in our Mexican data, it is of interest to see how sensitive this and the estimated derivatives are to this choice of specification. We therefore estimate quartic and quintic versions of equation (10) and plot the fitted coefficients in Figure 6. As noted above, in the presence of measurement error, pseudo-panel estimation will still allow consistent estimation of the slope parameters with higher-order polynomials, but will not give consistent estimates of the cohort-specific intercepts. However, since correcting the intercepts for measurement error in the cubic case had very little effect on the solutions to equation (5), using the  $\hat{\alpha}_c$  estimated from the quartic and

quintic models is likely to provide reasonable estimates of the  $\alpha_c$  that can be used in solving equation (5) for these higher-order models. Figure 6 shows that the quartic and quintic models give very similar results to the cubic model within the range of data.

## **5.2. Slope parameter heterogeneity**

Our analysis has allowed for heterogeneity in the intercept term in the equation mapping lagged income to current income. It is also of interest to examine whether the shape of the income mapping also exhibits heterogeneity, and if so, to determine whether allowing for heterogeneity in the slope parameters will reveal evidence of a poverty trap. One problem with this approach is that allowing for more heterogeneity results in fewer observations being available to estimate each curve. We therefore chose to only allow for limited heterogeneity in the income mapping, letting the parameters  $\beta_1$ ,  $\beta_2$  and  $\beta_3$  in equation (10) differ according to three levels of education of the household head (0-6 years, 7-12 years, and 13 or more years). This allows for the possibility that individuals with higher education may be better able to overcome barriers to investment at low income levels, possibly by substituting skills for physical capital, or by being better able to access credit markets.

Table 5 reports the fitted coefficients, derivatives and crossing points. Figure 7 plots the estimated curves for the three education groups, at the average level of the cohort-specific intercepts.<sup>20</sup> We do indeed see heterogeneity in income dynamics by education level. The income mapping is steeper for higher education levels, indicating more rapid income growth, and the point of intersection with the 45 degree line lies at a higher level of

income. As a result, individuals with high education and low income will experience faster income growth than individuals with the same income and lower education. Nevertheless, one still sees that each of the three curves crosses the 45 degree line from above at income levels above the poverty line, so that there is no poverty trap in incomes, even after allowing for slope heterogeneity in dynamics across education groups. The derivatives evaluated at the intersection with the 45 degree line are all below unity, and are lower for the groups with less education.

### **5.3. Beyond Labor Income**

The above results find no evidence of poverty traps in Mexican labor income. One potential concern is that some of the households with very low or zero labor income could be non-poor due to other sources of income, such as auto-consumption, transfers, rent and interest. As these households are not poor, we would not expect to find them in a poverty trap. However, their inclusion among other households with similar labor income levels who rely much more on labor income in the estimation of income dynamics is likely to reduce the chance of detecting poverty traps for this latter group.

We therefore examine the robustness of our results to the use of more comprehensive measures of household welfare. We use data from Mexico's National Income and Expenditure Survey, the ENIGH. This survey has been taken biannually since 1992, and we use the six rounds from 1992-2002.<sup>21</sup> To allow direct comparison with the urban employment survey, we use only data from cities of population 100,000 and above. As with the ENEU data, we restrict our analysis to households with heads aged 25 to 49, and

define cohorts based on five year birth intervals of the household head within three education groups. This results in a sample size of between 3000 and 4000 households in each round. Further restricting the number of observations per cohort in a round to be at least 100 results in a pseudo-panel of 19 cohorts observed over 6 time periods.<sup>22</sup>

We consider four measures of household welfare. The first measure is total household labour income from the principle occupation of each member, which corresponds to the measure we have used in the ENEU. The second measure is total monetary income of the household, which includes household income from pensions, government transfer programs, rent, interest, remittances, and other monetary sources. The third measure, which we will call full income, adds the value of home-produced consumption, or auto-consumption<sup>23</sup>, to monetary income. The final measure is total expenditure, which includes both monetary expenditure and the value of autoconsumption. The correlation between household labor income and total household monetary income averages 0.91 across the six surveys for urban households with heads in the age range 25-49. We should therefore expect similar results for these two measures. The correlation with full income is not much less, at 0.87, while the correlation with total expenditure is 0.60.

Figure 8 plots the fitted cubic income mappings for these four measures of household welfare. The curves are plotted at the average of the cohort specific intercepts, with a measurement error correction made as in equation (16) under the assumption that the reliability ratio is 0.5. First, we note that shape of the estimated curve for labor income is very similar to that from the ENEU, seen in Figure 5. Secondly, total monetary income of

the household has very similar income dynamics as labor income, showing that the omission of secondary job and non-labor earnings does not appear to have a sizeable impact on the estimated dynamics. However, thirdly, we note that the shape of full household income, which includes the value of home-produced goods, and the shape of the expenditure relationship do exhibit more curvature than labor earnings. Nevertheless, most importantly we see that all four measures of household welfare have mappings which cross the 45 degree line from above. Moreover, the crossing points for full income and expenditure are at higher levels of pesos than labor income, and thus even further away from the poverty line. Hence our finding of no evidence for poverty traps extends to these other measures.

## **6. Conclusion**

This paper has shown how pseudo-panel methods can be used to investigate non-linear income dynamics in the presence of measurement error and individual heterogeneity. Panel data estimates suggested that income was very mobile, conditional on individual fixed effects, and that no individuals have income dynamics which could give rise to a poverty trap. Pseudo-panel analysis reveals more persistence in labor earnings, suggesting that measurement error is rather large in the panel data. Nevertheless, although we find some evidence of non-linearities in income dynamics, we estimate that the mapping from lagged income to current income always crosses the 45 degree line with a derivative less than unity and at income levels above the poverty line. Hence, there is no evidence for a poverty trap in labor income. This result is robust to allowing

different education groups to exhibit different income dynamics, and to using full income or expenditure in place of labor earnings.

The empirical studies which have found evidence for poverty traps have been in low-income rural areas in Africa. Although we do not find a poverty trap in urban income in Mexico, we do find a high degree of persistence in labor earnings. In related work, Antman and McKenzie (2005a) show that absolute mobility in urban Mexico is very low, suggesting that the high level of cross-sectional inequality in incomes will persist over time. Thus although the lack of a poverty trap suggests that poor individuals can experience income growth little by little over time, and not be trapped below some threshold level, this will be a rather slow process. The “Mexican dream” may therefore take a long time to be realized.

---

<sup>#</sup> We thank the editor and two anonymous referees for helpful comments.

<sup>\*</sup> Corresponding Author: *E-mail:* [dmckenzie@worldbank.org](mailto:dmckenzie@worldbank.org). *Address:* Development Research Group, World Bank, MSN MC3-300, 1818 H Street N.W., Washington, D.C. 20433, USA. *Fax* (202) 522-3518.

<sup>1</sup> See Bardhan, Bowles and Gintis (2000), Azariadis and Stachurski (2004) and Bowles, Durlauf and Hoff (2004) for recent summaries.

<sup>2</sup> The reason is that such contracts need to provide poor agents with rents as an incentive to exert effort. As agents become richer, these rents are progressively withdrawn, effectively creating 100-percent marginal tax on wealth accumulation by the poor, and hence causing the poor not to save. (Mookherjee and Ray, 2002).

<sup>3</sup> However, see Dasgupta (1997) for a critique of empirical studies of the nutrition-based efficiency wage model.

<sup>4</sup> They note (p.2) that "with long enough panels, this limitation might be moot, but in the short term...panels with more than two or three observations in a span of a few years remain quite uncommon".

<sup>5</sup> Barrett et al. (2005) and Adato, Carter and May (2005) regress income on assets such as farm size, education, number of cattle, farm equipment and transfer income. They then use the coefficients from this regression to obtain a predicted asset measure. However, if assets are correlated with measurement error in income, then this first-stage will give biased coefficients on each of the assets.

<sup>6</sup> Only limited data on asset ownership, in the form of housing infrastructure, is available in our survey and so we do not examine asset dynamics here. Nevertheless, the methods proposed here could also be used to form pseudo-panel estimates of asset dynamics where such data are available.

<sup>7</sup> Jalan and Ravallion (2004) also allow the data generating process to contain individual fixed effects, but they do not use these to test whether poverty traps hold for some individuals and not for others.

---

<sup>8</sup> Curve D represents a different type of poverty trap, where the dynamics are possibly convex, but convergence is to a very low level of income below the poverty line. We will also investigate evidence for this type of poverty trap.

<sup>9</sup> To see this, note that the error term in the differenced equation contains  $\Delta\varepsilon_{i,t} - \beta_1\Delta\varepsilon_{i,t-1}$ . As a result,

$Y_{i,t-2}$  will be correlated with the error term through  $\varepsilon_{i,t-2}$ . If the  $\varepsilon_{i,t}$  are serially uncorrelated, then

$E(Y_{i,t-3}\varepsilon_{i,t-2}) = 0$  and  $Y_{i,t-3}$  will serve as an instrument.

<sup>10</sup> Alternatively one can use lagged cohort means as instruments, as in Collado (1997). McKenzie (2004) discusses the practical and theoretical issues involved in choosing between the OLS and IV approaches to estimating linear dynamic models on cohort averages.

<sup>11</sup> More generally, we can allow for a fixed component in the measurement error term for each cohort, which gets captured in the cohort-specific effect  $\alpha_c$ .

<sup>12</sup> The survey was changed after this date, preventing the use of more recent data.

<sup>13</sup> Cohorts must be defined on the basis of time-invariant characteristics of households. The choice of age and education of the household head is a common one, and previous work in Mexico (McKenzie 2003) has found that these characteristics of the head do not change greatly, even in periods of crisis. In contrast, measures such as household productive asset holdings can change from one period to another, and are thus not suitable for defining cohorts.

<sup>14</sup> In Antman and McKenzie (2005a) we investigate how sensitive linear pseudo-panel models are to different ways of defining them from the Mexican rotating panel used here. We find only small differences when using a pseudo-panel of individuals who stay in the panel for more than one period.

<sup>15</sup> Figure 2 was estimated via the locally weighted regression of Fan (1992). The procedure involves dividing the income distribution into a set of equally-spaced grid points and running a weighted regression of income on its lagged value within a small bandwidth of each grid point, where the weights used here are given by the Epanechnikov kernel. Figure 2 is a graph of the predicted values at those grid points for a bandwidth of 50 pesos and a grid size of 200, but the general shape is robust to changes in the bandwidth and grid size. See Knieser and Li (2002) for further discussion of estimation of local regressions with dynamic data.

<sup>16</sup> Note that this does not imply absolute convergence within one quarter, but rather conditional convergence: all individuals with the same individual fixed effect  $\alpha_i$  converge rapidly to the same labor income level. The range of  $\alpha_i$ 's is large, as reported in Table 2, so large differences in income between individuals can still arise from these fixed effects. See Antman and McKenzie (2005) for more discussion of this point.

<sup>17</sup> The linear and quadratic comparisons are very similar and are contained in the working paper (Antman and McKenzie 2005b).

<sup>18</sup> The solutions and derivatives for the quadratic and cubic models which are outside the range of observed incomes are provided in the working paper version (Antman and McKenzie 2005b).

<sup>19</sup> However a finding that there is no poverty trap having taken out aggregate time effects is a somewhat hollow finding if these aggregate shocks are the main factors pushing households below some threshold.

<sup>20</sup> All terms in the cubic are significant at the 1% level for each education group.

<sup>21</sup> Earlier rounds of this survey were also conducted in 1989 and 1984. The inclusion of these surveys would require estimating income dynamics over unequally-spaced time periods. While in principal the methods of McKenzie (2001) could be extended to cover the measurement error case, we choose to focus on the equally-spaced surveys for this paper.

<sup>22</sup> There are 82 cohort-wave observations, since some cohorts are not observed in every round, either due to insufficient observations, or due to the cohort being out of the 25-49 year age range for the household head.

<sup>23</sup> The ENIGH survey collects the quantities of these goods consumed by households and values them at market prices. The range of goods is the same as is included for monetary consumption, and thus includes home-produced clothing in addition to home-grown food.

## References:

- Adato, M., M. Carter and J. May (2005) "Sense in Sociability? Social Exclusion and Persistent Poverty in South Africa", forthcoming, *Journal of Development Studies*.
- Antman, F. and D. McKenzie (2005a) "Earnings Mobility and Measurement Error: A Pseudo-Panel Approach", *World Bank Policy Research Working Paper No. 3745*.
- Antman, F. and D. McKenzie (2005b) "Poverty Traps and Nonlinear Income Dynamics with Measurement Error and Individual Heterogeneity", *World Bank Policy Research Working Paper No. 3764*.
- Arellano, M. and S. Bond (1991) "Some tests of specification for panel data: Monte Carlo evidence and an application to employment equations", *Review of Economic Studies* 58: 277-97.
- Azariadis, C. and J. Stachurski (2004) "Poverty Traps", forthcoming in P. Aghion and S. Durlauf (eds.) *Handbook of Economic Growth*.
- Bardhan, P., S. Bowles, and H. Gintis (2000) "Wealth Inequality, Credit Constraints, and Economic Performance", pp. 541-603 in A.B. Atkinson and F. Bourguignon (eds.) *Handbook of Income Distribution*, North-Holland: Amsterdam.
- Banerjee, A. and A. Newman (1993) "Occupational Choice and the Process of Development", *Journal of Political Economy* 101(2): 274-298.
- Barrett, C. P.Marenya, J.McPeak, B. Minten, F. Murithi, W. Oluoch, Kosura, F. Place, J.C. Randrianarisoa, J. Rasambainarivo and J. Wangila (2005) "Welfare Dynamics in Rural Kenya and Madagascar," *Journal of Development Studies*, forthcoming.



Bound, J., C. Brown, and N. Mathiowetz (2001) "Measurement Error in Survey Data", pp. 3705-3843 in J. Heckman and E. Leamer (eds.), *Handbook of Econometrics* Volume 5, Elsevier: Amsterdam.

Bound, J., and A. Krueger (1991) "The extent of measurement error in longitudinal earnings data: do two wrongs make a right?", *Journal of Labor Economics* 12: 345-68.

Bowles, S., S. Durlauf and K. Hoff (2004) Poverty Traps, manuscript in press.

Carter, M. and C. Barrett (2005) "The Economics of Poverty Traps and Persistent Poverty: An Asset-based approach", SAGA Working Paper 178.

Collado, M.D. (1997) "Estimating dynamic models from time series of independent cross-sections", *Journal of Econometrics* 82(1): 37-62.

Comité Técnico para la Medición de la Pobreza (CTMP) (2002) "Medición de la Pobreza: Variantes metodológicas y estimación preliminar" (Poverty Measurement: Technical variants and Preliminary Estimation), Secretaría de Desarrollo Social: Mexico.

Dasgupta, P. (1997) "Nutritional Status, the Capacity for Work, and Poverty Traps", *Journal of Econometrics* 77: 5-37.

Dasgupta, P. and D. Ray (1986) "Inequality as a Determinant of Malnutrition and Unemployment", *The Economic Journal* Vol. 96, No. 384: 1011-34.

Deaton, A. (1985) "Panel data from time series of cross-sections", *Journal of Econometrics* 30: 109-126.

Fan, J. (1992) "Design-adaptive nonparametric regression", *Journal of the American Statistical Association* 87: 998-1004.

Galor, O. and J. Zeira (1993) "Income Distribution and Macroeconomics", *Review of Economic Studies* 60(1): 35-52.

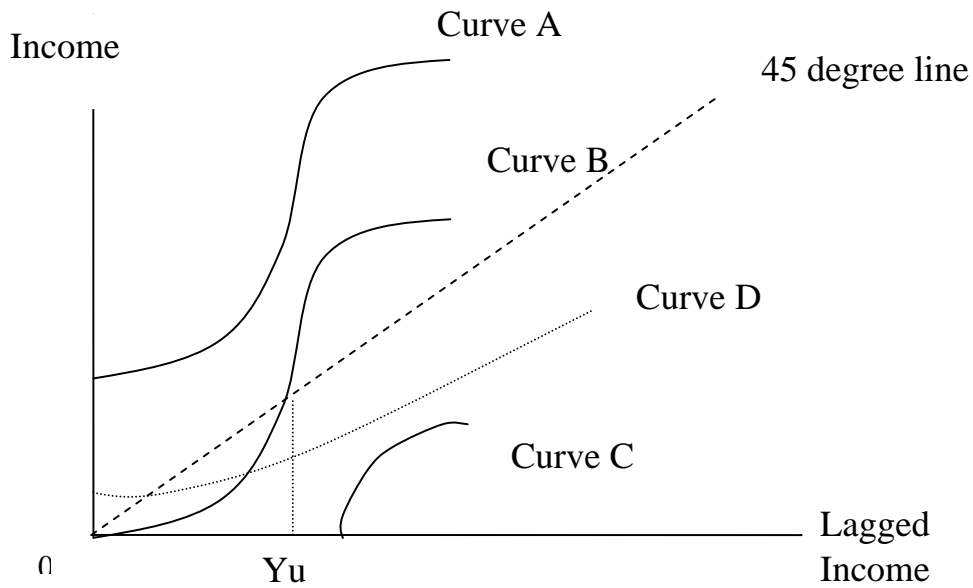
- Ghatak, M., M. Morelli and T. Sjoström (2001) "Occupational Choice and Dynamic Incentives", *Review of Economic Studies* 68(4): 781-810.
- Jalan, J. and M. Ravallion (2004). "Household Income Dynamics in Rural China", pp. 108-124 in S. Dercon (eds.) *Insurance Against Poverty*, Oxford University Press: Oxford.
- Kniesner, T. and Q. Li (2002). "Nonlinearity in Dynamic Adjustment: Semiparametric Estimation of Panel Labor Supply," *Empirical Economics* 27:131-148.
- Lokshin, M. and M. Ravallion (2004) "Household Income Dynamics in Two Transition Economies", *Studies in Nonlinear Dynamics and Econometrics* 8(3), Article 4. <http://www.bepress.com/snede/vol8/iss3/art4>.
- Lybbert, T., C. Barrett, S. Desta, and D. Coppock (2004) "Stochastic Wealth Dynamics and Risk Management Among a Poor Population", *The Economic Journal* 114: 750-777.
- McKenzie, D. (2001) "Estimation of AR(1) models with unequally-spaced pseudo-panels", *Econometrics Journal*, 4: 89- 108
- McKenzie, D. (2003) "How do households cope with aggregate shocks? Evidence from the Mexican peso crisis", *World Development* 31(7): 1179-1199.
- McKenzie, D. (2004) "Asymptotic theory for heterogeneous dynamic pseudo-panels", *Journal of Econometrics* 120(2): 235-262.
- McKenzie, D. and C. Woodruff (2003) "Do entry costs provide an empirical basis for poverty traps? Evidence from Mexican microenterprises", BREAD Working Paper No. 020.
- Mookherjee, D. and D. Ray (2002) "Contractual Structure and Wealth Accumulation", *American Economic Review* 92(4): 818-849.

Moffitt, Robert (1993) "Identification and estimation of dynamic models with a time series of repeated cross-sections", *Journal of Econometrics* 59(1): 99-124.

Strauss, J. and D. Thomas (1998) "Health, Nutrition, and Economic Development", *Journal of Economic Literature* 36(2): 766-817.

Verbeek, M. and F. Vella (forthcoming) "Estimating dynamic models from repeated cross-sections", *Journal of Econometrics*.

Figure 1: Individual Heterogeneity, Non-Convexities and Poverty Traps



Curves A, B and C display non-convexities and are simply shifted up or down due to different values of  $\alpha_i$ . Curve A does not display a poverty trap because it does not intersect the 45 degree line from below. Curve B demonstrates the case where there is a distinct poverty trap for those below income level Yu. Curve C is the extreme case where everyone is subject to a poverty trap and converges to zero income. Curve D shows a poverty trap arising from convergence to a low-level equilibrium.

Figure 2: Semi-parametric Panel Data Estimation of Income Dynamics

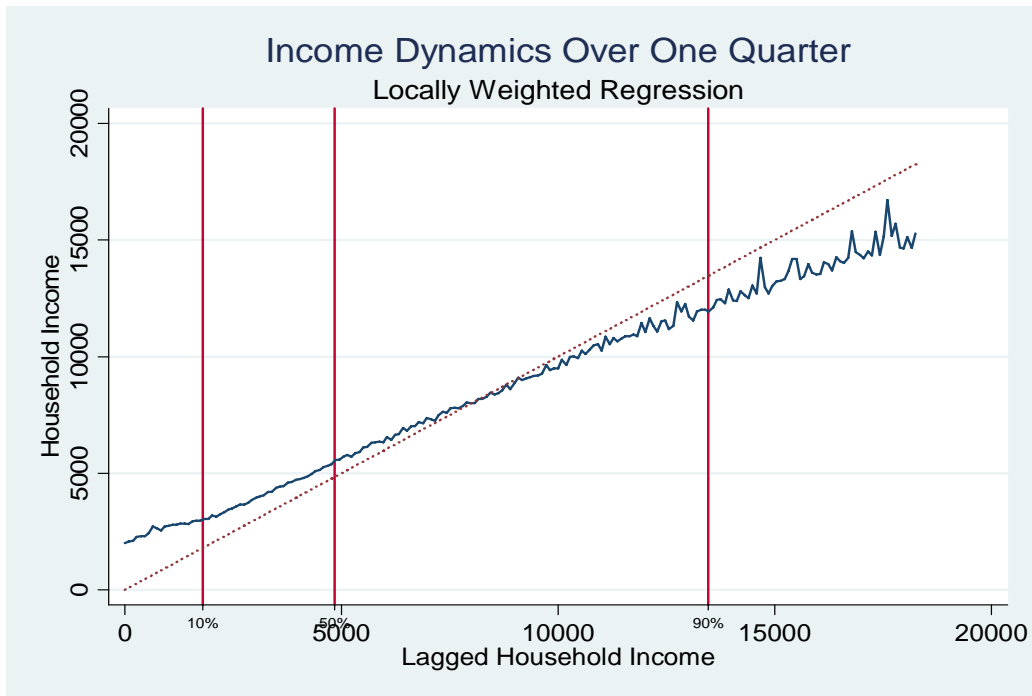


Figure 3: Arellano-Bond Panel Data Estimates

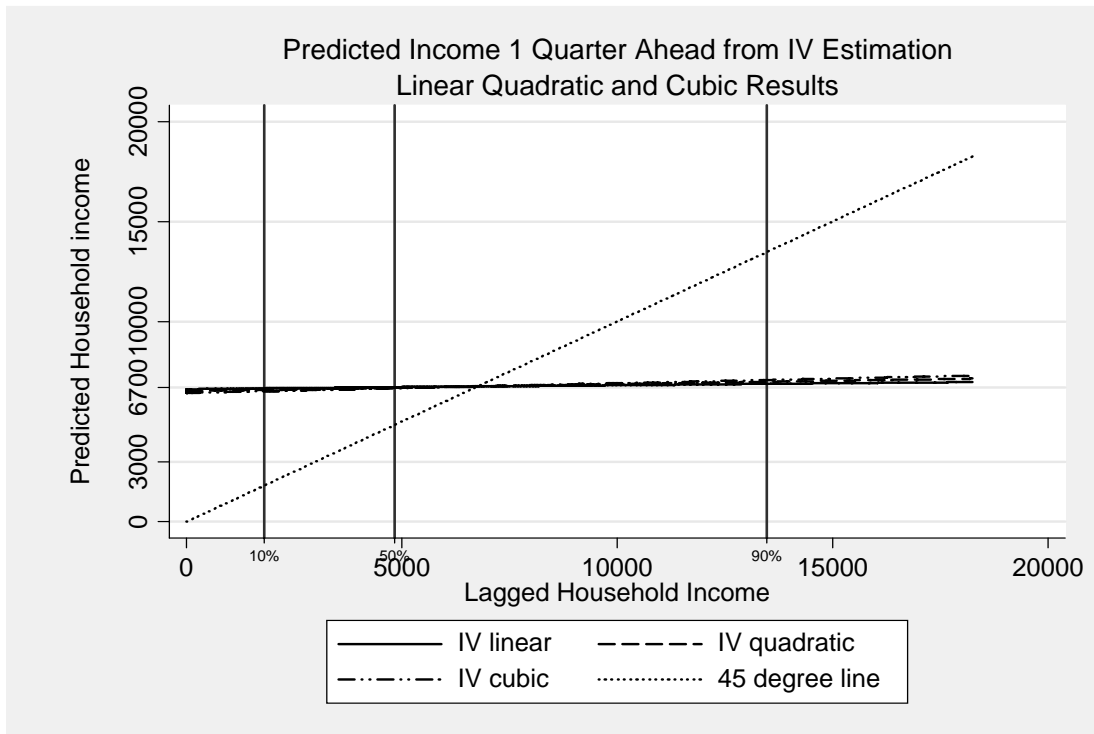


Figure 4: Pseudo-Panel Quadratic Estimates with and without Cohort Fixed Effects

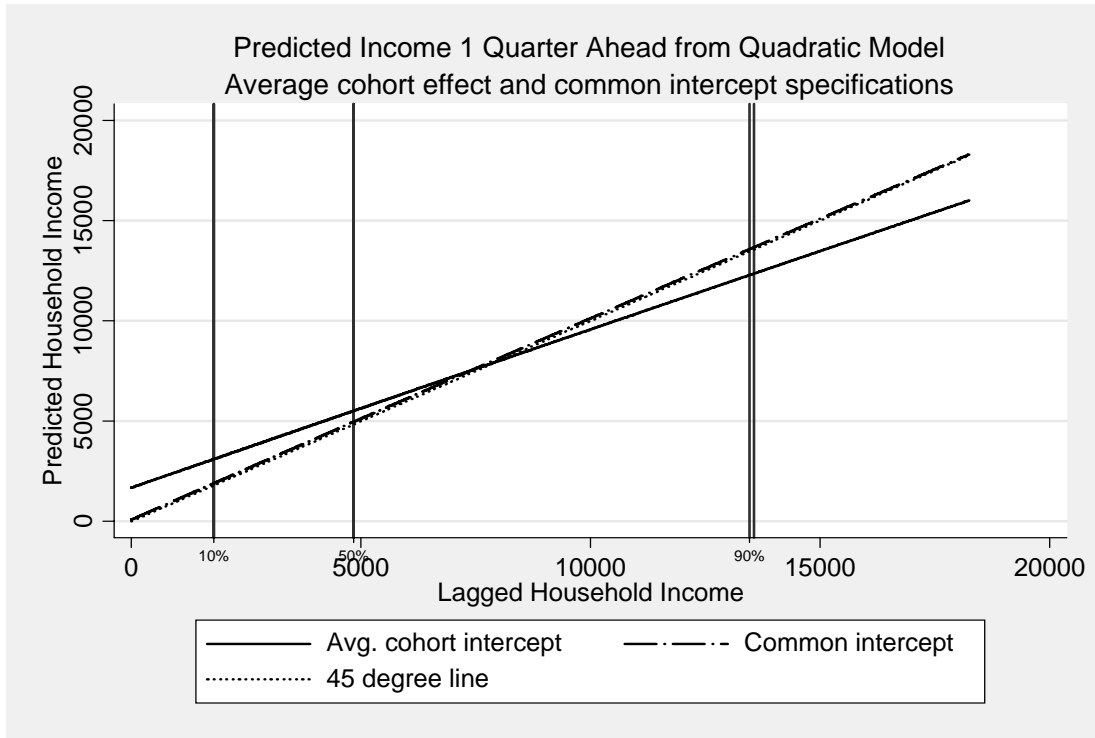


Figure 5: Comparison of Panel and Pseudo Panel Estimates for the Cubic Model

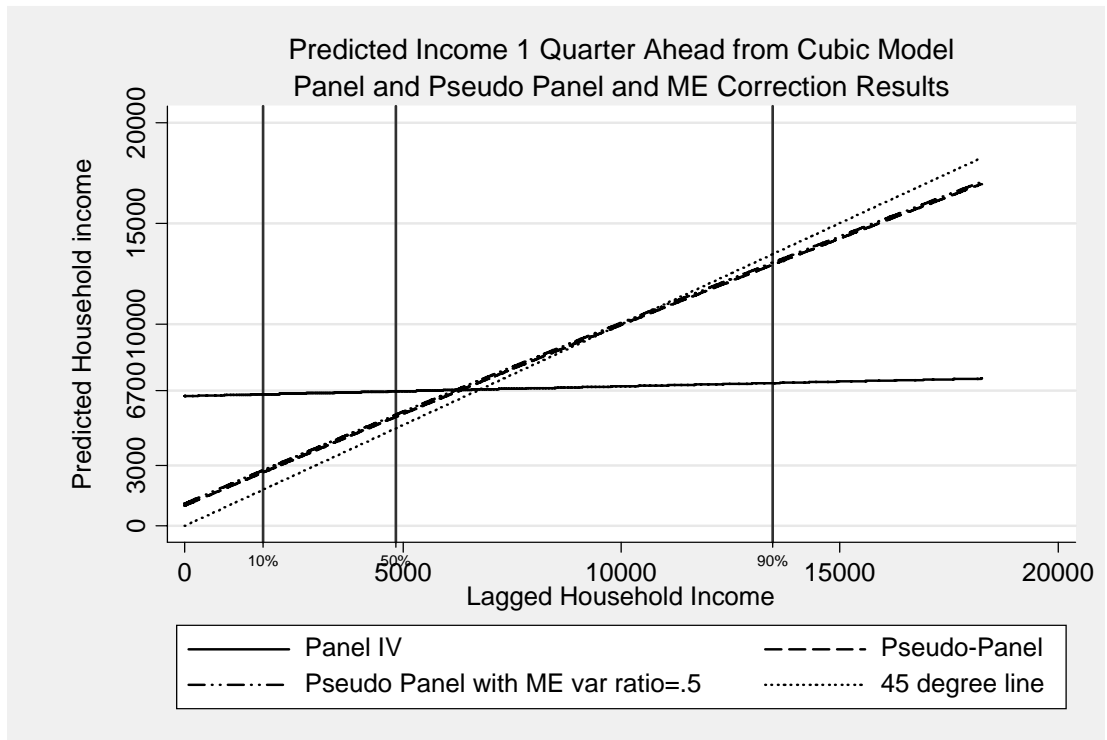


Figure 6: Income Dynamics with higher-order terms

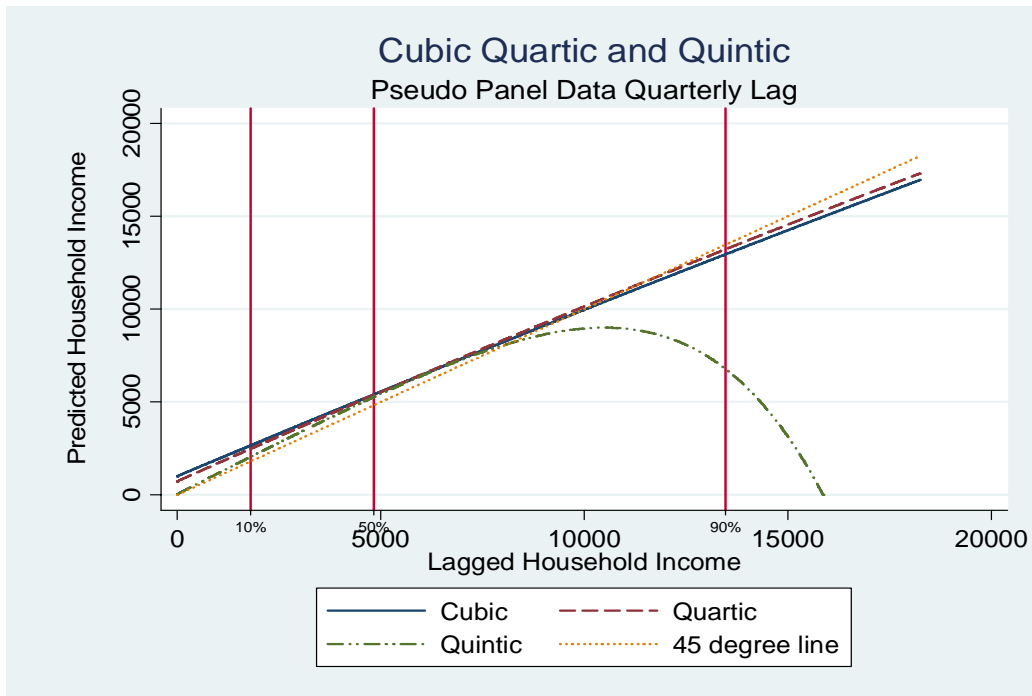


Figure 7: Pseudo-Panel estimates with Education Group Slope Heterogeneity

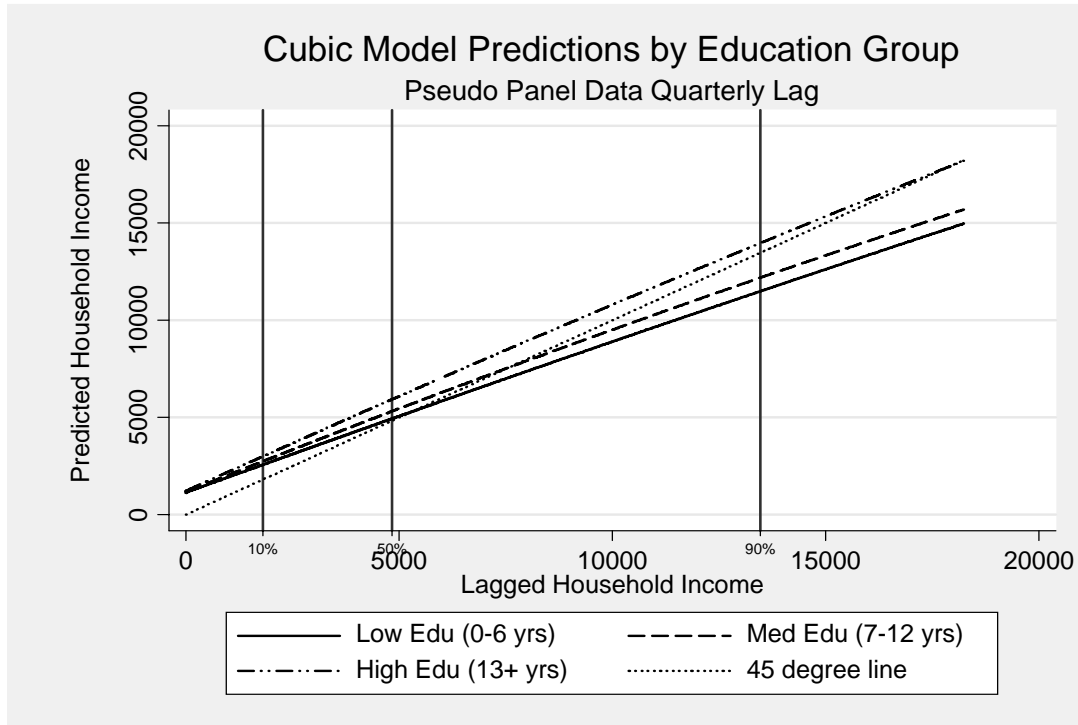
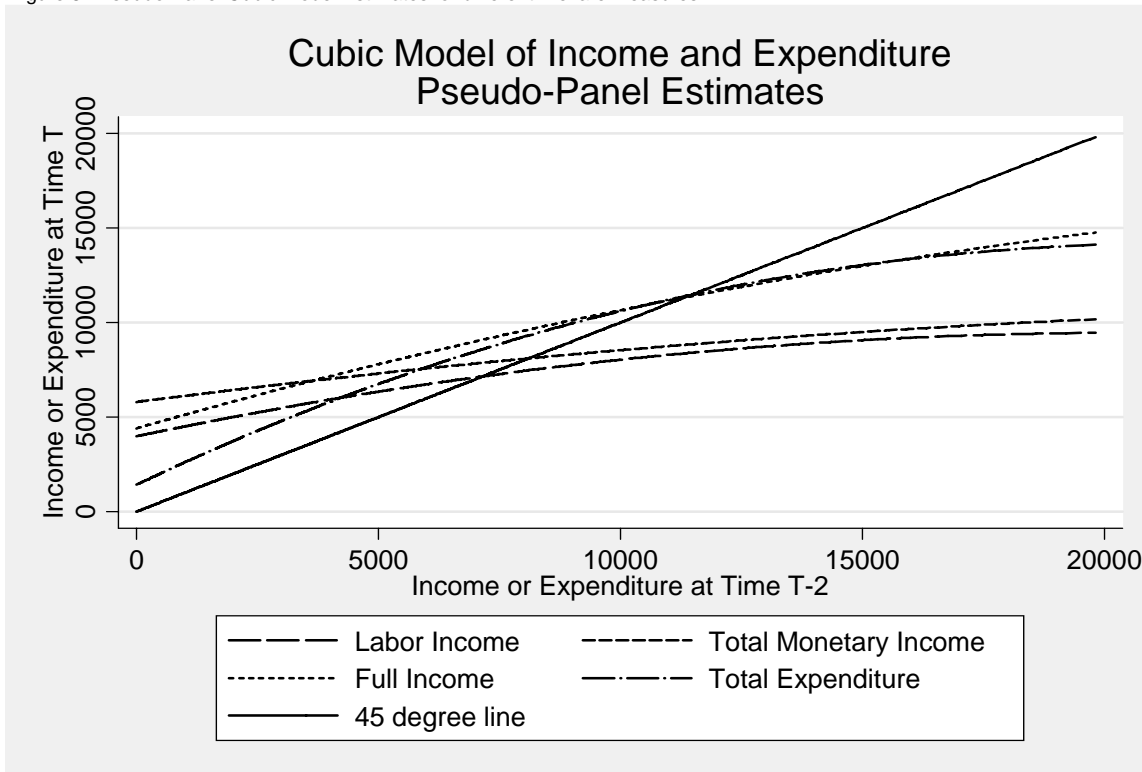


Figure 8: Pseudo-Panel Cubic Model Estimates for different Welfare Measures





**Table 1: Slope Parameter Estimates from Quarterly ENEU Data**

		Linear	Quadratic Model		Cubic Model		
		$\beta_1$	$\beta_1$	$\beta_2$	$\beta_1$	$\beta_2$	$\beta_3$
1. Panel Data Arellano-Bond	Coefficient	0.012	0.022	-1.210E-08	0.035	-6.670E-08	2.05E-14
	T-statistic	4.97	5.85	-5.40	6.67	-6.74	6.36
	[95% confidence interval]	[.007, .017]	[.015, .030]	[-1.65e-8, -7.72e-9]	[.025, .045]	[-8.62e-8, -4.73e-8]	[1.42e-14, 2.68e-14]
	Household-quarter obs.	787094	787094	787094	787094	787094	787094
2. Pseudo-Panel w/o heterogeneity	Coefficient	0.971	1.011	-7.030E-07	1.116	-3.430E-06	1.89E-12
	T-statistic	103.72	100.81	-8.80	72.36	-10.71	8.77
	[95% confidence interval]	[.953, .989]	[.999, 1.03]	[-8.60e-7, -5.46e-7]	[1.086, 1.147]	[-4.05e-6, -2.80e-6]	[1.47e-12, 2.32e-12]
	Cohort Fixed Effects	No	No	No	No	No	No
	Cohort-quarter obs.	832	832	832	832	832	832
3. Pseudo-Panel with heterogeneity	Coefficient	0.730	0.794	-5.190E-07	0.924	-2.770E-06	1.54E-12
	T-statistic	32.47	33.09	-6.55	30.90	-8.32	6.95
	[95% confidence interval]	[.686, .774]	[.747, .841]	[-6.75e-7, -3.63e-7]	[.865, .983]	[-3.43e-6, -2.12e-6]	[1.10e-12, 1.97e-12]
	Cohort Fixed Effects	Yes	Yes	Yes	Yes	Yes	Yes
Cohort-quarter obs.	832	832	832	832	832	832	
4. Pseudo-Panel with heterogeneity and period fixed effects	Coefficient	0.529	0.599	-3.450E-07	0.737	-2.130E-06	1.19E-12
	T-statistic	18.06	18.29	-4.54	18.11	-6.43	5.53
	[95% confidence interval]	[.472, .587]	[.534, .663]	[-4.94e-07, -1.96e-07]	[.657, .817]	[-2.78e-06, -1.48e-06]	[7.67e-13, 1.61e-12]
	Cohort Fixed Effects	Yes	Yes	Yes	Yes	Yes	Yes
	Period Fixed Effects	Yes	Yes	Yes	Yes	Yes	Yes
	Cohort-quarter obs.	832	832	832	832	832	832
Derivatives Conf. Interval	[.472, .587]		[.527, .662]		[.604, .817]		

Notes: w/o is an abbreviation for without.

Derivatives confidence interval for row 4 is the union of confidence intervals calculated at the maximum and minimum solutions.

**Table 2: Roots and Derivatives from Panel Analysis, Quarterly Lag**

**Linear Model**

	Solution <sup>1</sup>	Derivative <sup>2</sup>	95% Confidence Interval
Min	0	0.012	[.007, .017]
25%	3195	0.012	[.007, .017]
50%	5076	0.012	[.007, .017]
75%	8295	0.012	[.007, .017]
Max	1381107	0.012	[.007, .017]

**Quadratic Model**

	Solution	Derivative	95% Confidence Interval
Min	0	0.022	[.015, .030]
25%	3195	0.022	[.015, .030]
Solution 1 50%	5077	0.022	[.015, .030]
75%	8295	0.022	[.015, .030]
Max	1381107	-0.011	[-.018, -.004]

	Solution	Derivative	95% Confidence Interval
Min	-8.07E+07	2.011	[1.283, 2.739]
25%	-8.07E+07	1.978	[1.262, 2.694]
Solution 2 50%	-8.07E+07	1.978	[1.262, 2.694]
75%	-8.07E+07	1.978	[1.262, 2.694]
Max	-8.07E+07	1.978	[1.262, 2.693]

**Cubic Model**

	Solution	Derivative	95% Confidence Interval
Min	8043018	2.943	[2.011, 3.874]
25%	8672744	3.507	[2.400, 4.614]
Solution 1 50%	8673984	3.508	[2.400, 4.615]
75%	8674709	3.508	[2.401, 4.616]
Max	8675938	3.510	[2.402, 4.617]

	Solution	Derivative	95% Confidence Interval
Min	-6170993	3.202	[2.235, 4.169]
25%	-5427908	2.573	[1.797, 3.348]
Solution 2 50%	-5425930	2.571	[1.796, 3.346]
75%	-5424773	2.570	[1.796, 3.345]
Max	-5422807	2.569	[1.795, 3.343]

	Solution	Derivative	95% Confidence Interval
Min	-0.0452828	0.035	[.025, .045]
25%	3194.765	0.034	[.024, .044]
Solution 3 50%	5077.378	0.034	[.024, .044]
75%	8295.744	0.034	[.024, .044]
Max	1381107	-0.032	[-.043, -.022]

<sup>1</sup>Solution refers to the solution to the equation  $Y_{i,t} = \beta_1 Y_{i,t} + \beta_2 Y_{i,t}^2 + \beta_3 Y_{i,t}^3 + \alpha_i$  where the number of terms in the polynomial correspond to the linear, quadratic and cubic models.

<sup>2</sup>Derivative refers to the derivative of the polynomial evaluated at the solution

**Table 3: Roots and Derivatives from Pseudo-Panel Analysis, Quarterly Lag**

Solutions for the quadratic and cubic model are only reported for crossing points within the data range.

**Linear Model**

	Solution <sup>1</sup>	Derivative <sup>2</sup>	95% CI
Min	3554	0.730	[.686, .774]
25%	5312	0.730	[.686, .774]
50%	6249	0.730	[.686, .774]
75%	9705	0.730	[.686, .774]
Max	18200	0.730	[.686, .774]

**Quadratic Model**

	<u>No Measurement Error</u>			<u>Measurement Error Correction</u>					
	Solution	Derivative	95% CI	Variance Ratio <sup>3</sup> =.8			Variance Ratio=.5		
				Solution	Derivative	95% CI	Solution	Derivative	95% CI
Min	3636	0.790	[.744, .837]	3599	0.790	[.744, .837]	3544	0.790	[.744, .837]
25%	5405	0.788	[.742, .835]	5368	0.788	[.742, .835]	5313	0.789	[.742, .835]
50%	6593	0.787	[.741, .833]	6557	0.787	[.741, .834]	6502	0.787	[.741, .834]
75%	9848	0.784	[.738, .830]	9812	0.784	[.738, .830]	9758	0.784	[.738, .830]
Max	19605	0.774	[.729, .819]	19571	0.774	[.729, .819]	19520	0.774	[.729, .819]

**Cubic Model**

	<u>No Measurement Error</u>			<u>Measurement Error Correction</u>					
	Solution	Derivative	95% CI	Variance Ratio <sup>3</sup> =.8			Variance Ratio=.5		
				Solution	Derivative	95% CI	Solution	Derivative	95% CI
Min	3965	0.902	[.847, .957]	4381	0.900	[.845, .955]	4988	0.897	[.842, .951]
25%	6098	0.890	[.837, .944]	6470	0.888	[.835, .942]	7017	0.885	[.832, .938]
50%	7521	0.883	[.830, .935]	7869	0.881	[.828, .933]	8381	0.878	[.826, .930]
75%	11508	0.861	[.811, .911]	11802	0.859	[.810, .909]	12238	0.857	[.808, .906]
Max	23584	0.796	[.752, .840]	23785	0.795	[.751, .839]	24085	0.793	[.749, .837]

<sup>1</sup>Solution refers to the solution to the equation  $Y_{i,t} = \beta_1 Y_{i,t} + \beta_2 Y_{i,t}^2 + \beta_3 Y_{i,t}^3 + \alpha$ .

where the number of terms in the polynomial correspond to the linear, quadratic and cubic models.

<sup>2</sup>Derivative refers to the derivative of the polynomial evaluated at the solution

<sup>3</sup>Variance Ratio refers to  $\text{Var}(Y_{i,t}^*) / \text{Var}(Y_{i,t})$ , where \* indicates truth

**Table 4: Pseudo-Panel Estimates over longer intervals**

		Cubic Model		
		$\beta_1$	$\beta_2$	$\beta_3$
1. Pseudo-Panel with heterogeneity (Quarterly ENEU data)	Coefficient	0.924	-2.770E-06	1.54E-12
	T-statistic	30.90	-8.32	6.95
	[95% confidence interval]	[.865, .983]	[-3.43e-6, -2.12e-6]	[1.10e-12, 1.97e-12]
	Cohort Fixed Effects	Yes	Yes	Yes
	Cohort-quarter obs.	832	832	832
	Cubic Solution range:	3965 to 23584		
	Cubic Derivative range: Derivative Confidence Interval	0.796 to 0.902 [.752, .957]		
2. Pseudo-Panel with heterogeneity (Yearly Interval)	Coefficient	0.595	-9.85E-07	4.28E-13
	T-statistic	16.53	-2.40	1.59
	[95% confidence interval]	[.524, .666]	[-1.79e-06, -1.81e-07]	[-1.01e-13, 9.57e-13]
	Cohort Fixed Effects	Yes	Yes	Yes
	Cohort-quarter obs.	789	789	789
	Cubic Solution range:	3567 to 20928		
	Cubic Derivative range: Derivative Confidence Interval	0.554 to 0.588 [.500, .655]		
3. Pseudo-Panel with heterogeneity (2-Year Intervals)	Coefficient	0.132	6.60E-07	-3.09E-13
	T-statistic	3.29	1.43	-1.01
	[95% confidence interval]	[.053, .211]	[-2.49e-07, 1.57e-06]	[-9.06e-13, 2.89e-13]
	Cohort Fixed Effects	Yes	Yes	Yes
	Cohort-quarter obs.	711	711	711
	Cubic Solution range:	3500 to 17500		
	Cubic Derivative range: Derivative Confidence Interval	0.137 to 0.155 [.062, .217]		
4. Pseudo-Panel with heterogeneity (5-Year Intervals)	Coefficient	-0.527	1.33E-06	-6.92E-13
	T-statistic	-12.92	2.66	-2.00
	[95% confidence interval]	[-.607, -.447]	[ 3.48e-07, 2.32e-06]	[-1.37e-12, -1.34e-14]
	Cohort Fixed Effects	Yes	Yes	Yes
	Cohort-quarter obs.	476	476	476
	Cubic Solution range:	3600 to 15000		
	Cubic Derivative range: Derivative Confidence Interval	-0.517 to -0.487 [-.593, -.425]		

**Table 5: Pseudo-Panel Estimates with Education Slope Heterogeneity**  
Quarterly ENEU Data

	(1) Low Edu (0-6 yrs)	(2) Med Edu (7-12 yrs)	(3) High Edu (13+ yrs)
$\beta_1$	0.798	0.881	0.986
T-statistic	18.52	13.26	16.56
$\beta_2$	-2.180E-06	-4.78E-06	-3.29E-06
T-statistic	-5.68	-2.86	-4.71
$\beta_3$	1.23E-12	6.17E-12	1.85E-12
T-statistic	5.18	1.95	3.84
Cohort Fixed Effects	Yes	Yes	Yes
Cohort-quarter observations:	293	288	251
Solution (Min):	3679	4950	12520
Derivative	0.782	0.834	0.904
CI of Derivative:	[.698, .865]	[.725, .943]	[.811, .998]
Solution (Max):	7597	10914	26556
Derivative	0.765	0.779	0.815
CI of Derivative:	[.682, .847]	[.688, .870]	[.737, .892]

Solutions correspond to Min and Max of solution reasonably near range of data  
All cohort-period observations are averages based on at least 100 household observations