



GSI and General Scanning are registered trademarks.

G Series Interface Drawings

General Scanning Optical Scanners



The information contained in this document is the sole property of GSI Group, Inc.

The disclosure of this information does not constitute the release of any proprietary rights therein. Permission to reproduce this information or the products disclosed herein must be obtained in writing from GSI Group, Inc.

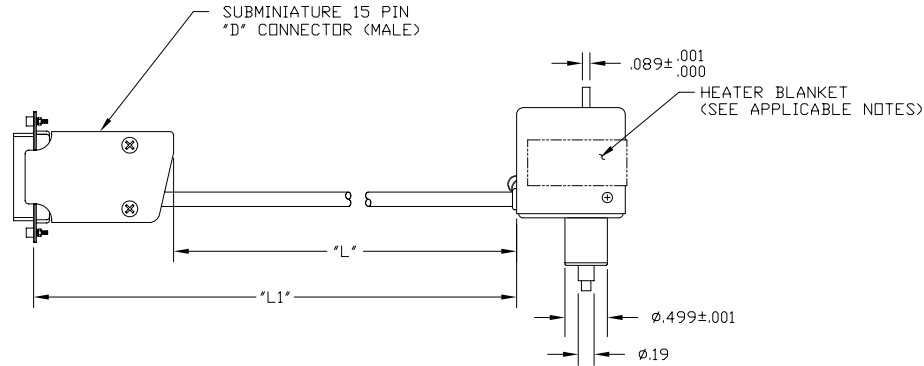
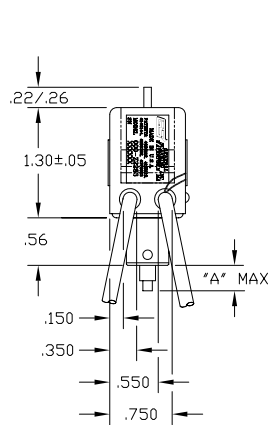
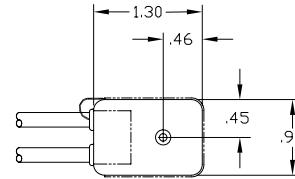
References found in this document to prior companies and division names such as General Scanning Inc., GSI Lumonics, and GMAX, now refer to General Scanning Optical Scanners, a member of GSI Group, Inc.

Contact Information

AMERICAS	EUROPE	ASIA
39 Manning Road Billerica, MA 01821 U.S.A. TEL: +1 (978) 439-5511 FAX: +1 (978) 663-0131 E-mail: ScannerSales-Americas@gsig.com Toll Free: +1 (800) 342-3757	Max-Planck-Str. 10 85716 Unterschleissheim Germany TEL: +49 (89) 31707-0 FAX: +49 (89) 31707-250 E-mail: ScannerSales-Europe@gsig.com	Technoport Kamata, 16-1 Minami-Kamata 2-Chrome Ohta-Ku Tokyo 144-0035, Japan TEL: [Sales] +81 (3) 5425-7733 TEL: [Service] +81 (3) 5714-0557 FAX: [Sales] +81 (3) 5425-7738 FAX: [Service] +81 (3) 5714-0566 E-mail: ScannerSales-Asia@gsig.com

PROPERTY OF GENERAL SCANNING
 This document is and shall remain an unpublished work of General Scanning protected by copyright. It is loaned for limited purposes only, remains the property of General Scanning, and is to be returned upon request. Neither it nor any of the information it contains shall be reproduced, used, or disclosed to anyone not having a need-to-know consistent with the purpose of the loan, without written consent of General Scanning.

SYM	REVISION	RECORD	DATE	APPVD.
R	PER ECN 8822			
S	REV MARKING PER ECN 9038			
T	REV PER ECN 9097		6/9/94	S.F.L.
SEE TABLE	REV MARKING PER ECN 10352			



DASH	MODIFIED SHAFT	"L"	"L1"	APPLICABLE NOTES	HUB "A" MAX	REV
-1		9±1		2, 3, 6	.30	U
-2		9±1		2, 4, 6		U
-3		17±1		2, 3, 6, 7		U
-4	YES	9±1		2, 3, 6	1.05	U
-5	YES	9±1		2, 4, 6		U
-6	YES		20.68±1	3, 6	.30	U
-7			72.00±1	2, 3, 6, 7	.30	A

NOTES:

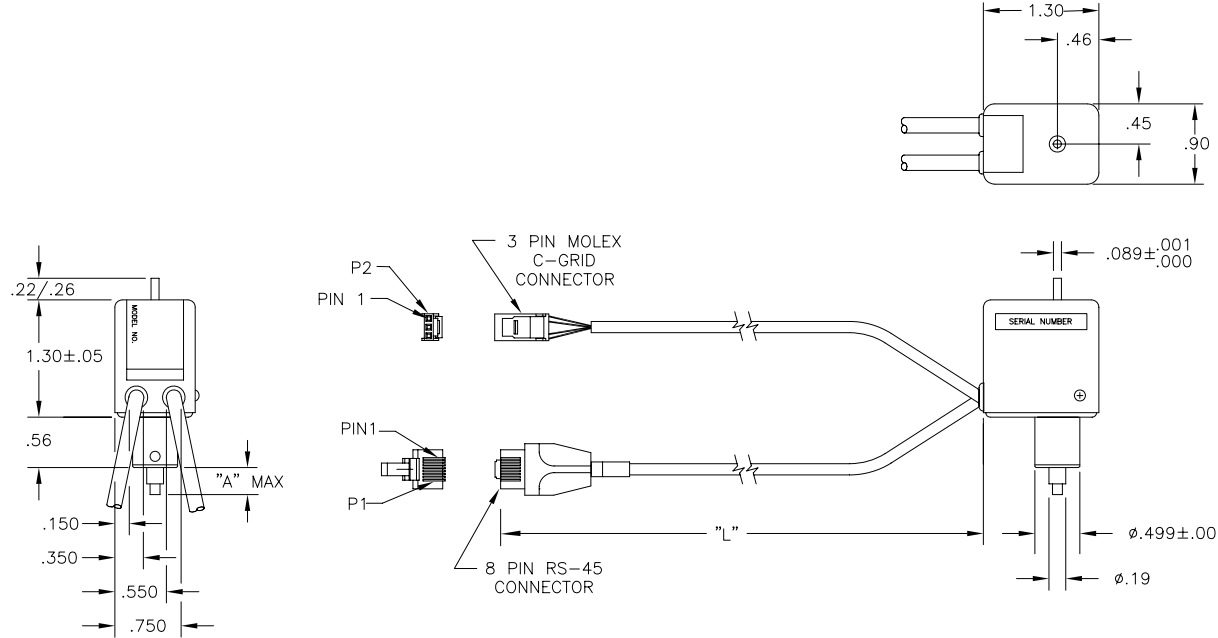
- 1.
2. NAME PLATE MAY BE SUBSTITUTED BY LASER MARKING AS PER M0570.
3. HEATER BLANKET NOT USED.
4. HEATER BLANKET USED.
- 5.
6. ALL DIMENSIONS ±.020 UNLESS OTHERWISE SPECIFIED.
7. INDIVIDUALLY PACKAGED (PG BOX + G1 INSERT)

MATERIAL				TREATMENT						
UNLESS SPECIFIED:				DRAWN	NAME	DATE	CAD FILE No.	OPT\06017-0U	CAGE No.	
DIMENSIONS ARE IN INCHES				DRAWN	G. TOBIASON	5-3-82	TITLE			
TOLERANCES: .XX = ± .01				CHECKER			OUTLINE			
.XXX = ± .005				Q.A.						
.XXXX = ± .0010				DES. ENG.	W. REIMELS					
ANG. = ± 0°30'				MFG. ENG.			GENERAL SCANNING			
REMOVE ALL BURRS AND SHARP EDGES				PROJ. MGR.	D. TWEED		INCORPORATED	SIZE	DRAWING NUMBER	REV
SCALE		in				WATERTOWN MA		C	3CD-06017	SEE TABLE
1=1		[mm]								

NOTES:

1. ALL DIMENSIONS ±.020 UNLESS OTHERWISE SPECIFIED.

REVISIONS				
ZONE	REV	DESCRIPTION	DATE	APPROVED
-	SEE TABLE	REVISED PER ECO # 2002-134		



- P1
- 1 VIOLET
 - 2 BLACK
 - 3 ORANGE
 - 4 WHITE
 - 5 BROWN
 - 6 RED
 - 7 NO CONNECTION
 - 8 NO CONNECTION

- P2
- 1 YELLOW / BLACK
 - 2 RED / GREEN
 - 3 NO CONNECTION

DASH	MODIFIED SHAFT	"L"	HUB "A" MAX	REV
-1		12±0.5		C
-2		39±0.5	.30	C
-3		78±0.5		C
-4	YES	12±0.5	1.05	A
-5	YES	39±0.5	1.05	A
-6	YES	78±0.5	1.05	A

UNLESS OTHERWISE SPECIFIED, DIMENSIONS ARE IN INCHES. TOLERANCES ARE:
 .X ± .1
 .XX ± .01
 .XXX ± .005
 .XXXX ± .0010
 ANGLES ± .5°
 DO NOT SCALE DRAWING
 REMOVE ALL BURRS AND BREAK SHARP EDGES
 ALL MACH SURFACES √

INTERPRET DRAWING IN ACCORDANCE WITH DOD-STD-100, ANSI Y14.3M

PROPERTY OF GSI LUMONICS
 THIS DOCUMENT IS AND SHALL REMAIN AN UNPUBLISHED WORK OF GSI LUMONICS. PROTECTED BY COPYRIGHT, IS LOANED FOR LIMITED PURPOSES ONLY. REMAINS THE PROPERTY OF GSI LUMONICS, AND IS TO BE RETURNED UPON REQUEST. NEITHER IT NOR ANY OF THE INFORMATION IT CONTAINS WILL BE REPRODUCED, USED, OR DISCLOSED TO ANYONE NOT HAVING A NEED-TO-KNOW CONSISTENT WITH THE PURPOSE OF THE LOAN, WITHOUT WRITTEN CONSENT OF GSI LUMONICS.

UNLESS OTHERWISE SPECIFIED, DIMENSIONS ARE IN MILLIMETERS. TOLERANCES ARE:
 X ± 2.5
 XX ± .25
 XXX ± .13
 XXXX ± .025
 ANGLES ± .5°
 DO NOT SCALE DRAWING
 REMOVE ALL BURRS AND BREAK SHARP EDGES
 ALL MACHINED SURFACES 1.6 MICRON

THIRD ANGLE PROJECTION

gsi Lumonics COMPONENT PRODUCTS GROUP

DRAWN: A. VALLEE 03-13-97
 DESIGN ENG: J. W. KING 05-19-97
 MFG ENG: D. BROWN 05-19-97

OUTLINE G1--DS

SIZE: C	CAGE CODE: 57246	DWG NO.: 310-18346	REV: SEE TABLE
SCALE: 1/1	SHEET 1 OF 1		

CAD FILE NAME: 18344-0C

4 3 2 1

NOTES:
1. ALL DIMENSIONS ±.020 UNLESS OTHERWISE SPECIFIED.

REVISIONS				
ZONE	REV	DESCRIPTION	DATE	APPROVED
-	SEE TABLE	REVISE PER ECO-2001-160		

P3

1	RED
2	RED
3	BLUE
4	BLUE

P2

1	RED
2	YELLOW
3	NO CONNECTION

P1

1	VIOLET
2	BLACK
3	ORANGE
4	WHITE
5	BROWN
6	RED
7	NO CONNECTION
8	NO CONNECTION

DETAIL A

P2

1	YELLOW / BLACK
2	RED / GREEN
3	NO CONNECTION

DASH	"L"	HUB "A" MAX	REV	DETAIL
-1	12±0.5		C	A
-2	39±0.5	.30	C	
-3	78±0.5		C	
-4	12±0.5	1.05	B	
-5	39±0.5		B	
-6	78±0.5		B	

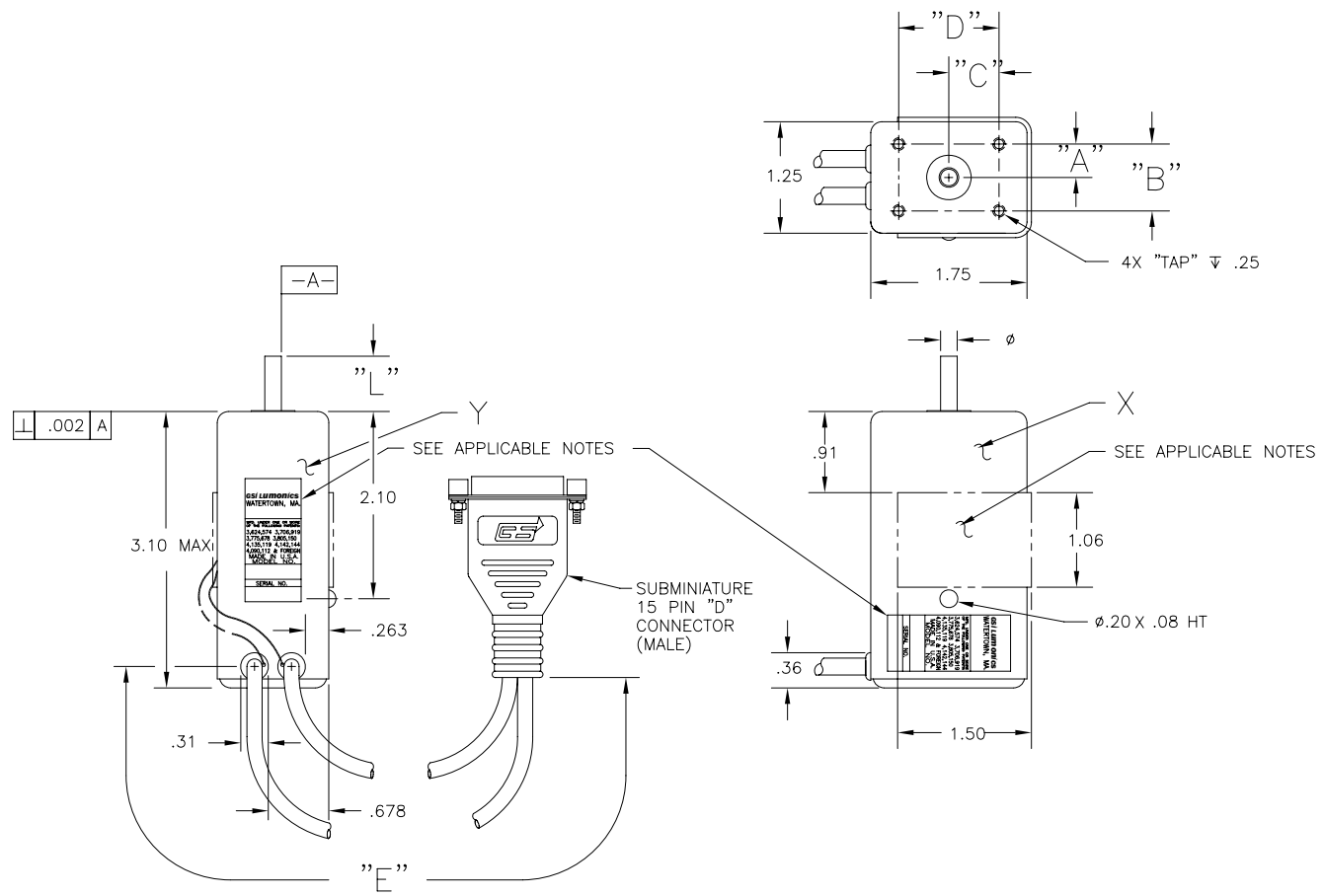
<p>INTERPRET DRAWING IN ACCORDANCE WITH DOD-STD-100, ANSI Y14.5M</p> <p>PROPERTY OF GSI LUMONICS THIS DOCUMENT IS AND SHALL REMAIN AN UNPUBLISHED WORK OF GSI LUMONICS PROTECTED BY COPYRIGHT. IS LOANED FOR LIMITED PURPOSES ONLY. REMAINS THE PROPERTY OF GSI LUMONICS, AND IS TO BE RETURNED UPON REQUEST. NEITHER IT NOR ANY OF THE INFORMATION IT CONTAINS WILL BE REPRODUCED, USED, OR DISCLOSED TO ANYONE NOT HAVING A NEED-TO-KNOW CONSISTENT WITH THE PURPOSE OF THE LOAN, WITHOUT WRITTEN CONSENT OF GSI LUMONICS.</p>		<p>UNLESS OTHERWISE SPECIFIED: DIMENSIONS ARE IN INCHES TOLERANCES ARE: XX ±.01 XXX ±.005 XXXX ±.0010 ANGLES ±.5° DO NOT SCALE DRAWING REMOVE ALL BURRS AND BREAK SHARP EDGES ALL MACH SURFACES </p> <p>THIRD ANGLE PROJECTION </p>		<p>GSI Lumonics 4E Crosby Drive, Bedford, Massachusetts, USA 01730</p> <p>DRAWN: KEN WYNN 3/4/97 DESIGN ENG: J.W. KING 4/18/97 MFG ENG: D.C. BROWN 5/16/97</p>		<p>OUTLINE G1__DTS</p> <p>SIZE: C CAGE CODE: 57246 DWG NO.: 3CD-18167</p>		<p>REV: SEE TABLE</p> <p>CAD FILE NAME: 18167-0C</p> <p>SCALE: 1/1</p> <p>SHEET 1 OF 1</p>	
--	--	---	--	---	--	---	--	--	--

4 3 2 1

NOTES:

1. LABEL AFFIXED SIDE "X"
2. LABEL AFFIXED SIDE "Y"
3. STATOR FACED OFF.
4. HEATER BLANKET NOT USED.
5. HEATER BLANKET USED.
6. SEE SHEET 2.
7. RETAINER SCREWS LATCHING HARDWARE USED.
8. NO LATCHING HARDWARE USED.
9. LABEL METRIC USED.

REVISIONS				
ZONE	REV	DESCRIPTION	DATE	APPROVED
-	SEE TABLE	REVISED PER ECO 990270		



REV	DASH	SHAFT		TAP SPACING				TAP SIZE	LEADS FROM	APPLICABLE NOTES	E ±1.00
		L±.05	∅	A	B	C	D				
D	-1	.62	(.187)	.375	.750	.562	1.125	6-32 UNC-2B	SIDE	1,3,4	9
	-2	.62	(.187)	.375	.750	.562	1.125	6-32 UNC-2B	SIDE	1,3,5	9
	-3	.62	(.187)	.375	.750	.562	1.125	M3 X 0.5mm	SIDE	1,3,5	9
	-4	.62	(.187)	.375	.750	.562	1.125	M3 X 0.5mm	SIDE	1,3,4	9
	-5	.62	(.187)	.375	.750	.562	1.125	M3 X 0.5mm	SIDE	1,3,5,6,7	9
C	-6	.62	(.187)	.375	.750	.562	1.125	6-32 UNC-2B	SIDE	1,3,5	27.75
D	-7	.62	(.187)	.375	.750	.562	1.125	6-32 UNC-2B	SIDE	1,3,4,7	9
C	-8	.62	(.187)	.450	.900	.700	1.400	6-32 UNC-2B	SIDE	1,3,5,8	9
	-9	.62	(.187)	.375	.750	.562	1.125	M3 X 0.5mm	SIDE	1,3,5,9	9
	-10	.62	(.187)	.375	.750	.562	1.125	M3 X 0.5mm	SIDE	1,3,4,9	9

SHEET 1 OF 2

INTERPRET DRAWING IN ACCORDANCE WITH DOD-STG-100, ANSI Y14.5M-1994

PROPERTY OF GSI LUMONICS
THIS DOCUMENT IS AND SHALL REMAIN AN UNPUBLISHED WORK OF GSI LUMONICS PROTECTED BY COPYRIGHT. IS LOANED FOR LIMITED PURPOSES ONLY. REMAINS THE PROPERTY OF GSI LUMONICS, AND IS TO BE RETURNED UPON REQUEST. NEITHER IT NOR ANY OF THE INFORMATION IT CONTAINS WILL BE REPRODUCED, USED, OR DISCLOSED TO ANYONE NOT HAVING A NEED-TO-KNOW CONSISTENT WITH THE PURPOSE OF THE LOAN, WITHOUT WRITTEN CONSENT OF GSI LUMONICS.

UNLESS OTHERWISE SPECIFIED, DIMENSIONS ARE IN INCHES TOLERANCES ARE:
XX ± .01
XXX ± .005
XXXX ± .0010
ANGLES ± .5°
DO NOT SCALE DRAWING
REMOVE ALL BURRS AND BREAK SHARP EDGES
ALL MACH SURFACES

THIRD ANGLE PROJECTION

gsl Lumonics
500 ARSENAL STREET, WATERTOWN, MA 02472

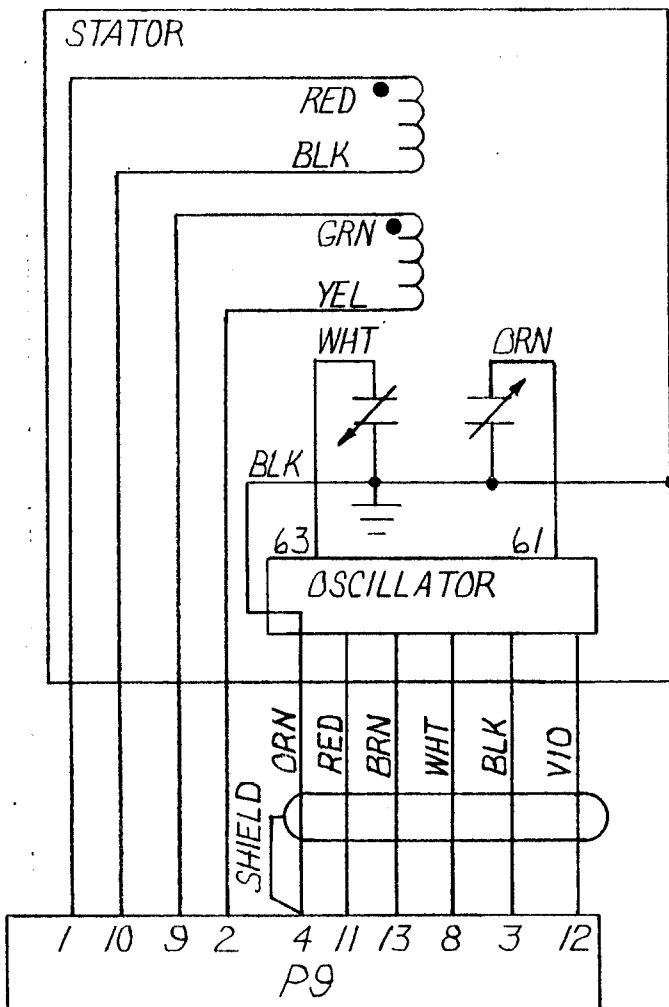
DRAWN P. MACAULAY	4-11-91	OUTLINE, G325D
DESIGN ENG P. GLYNN	1-4-88	
MFG ENG S. LEVESQUE	3-31-88	

SIZE C	CAGE CODE 57246	DWG NO. 3CD-10806	REV SEE TABLE
SCALE 1/1	SHEET 1 OF 1		

SYM	REVISION	RECORD	DATE	APPVD.
A	REL. TO	PROD. ECO 4833	7-9-85	JZ.

This document is and shall remain an unpublished work of General Scanning protected by copyright. It is loaned for limited purposes only, remains the property of General Scanning, and is to be returned upon request. Neither it nor any of the information it contains will be reproduced, used, or disclosed to anyone not having a need-to-know consistent with the purpose of the loan, without written consent of General Scanning.

PROPERTY OF GENERAL SCANNING

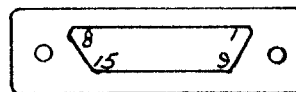


CONNECTOR PIN ASSIGNMENTS

1. DRIVE COIL RED
2. DRIVE COIL YELLOW
3. POSITION OUTPUT (-)
4. POSITION OUTPUT (COMMON)
5. N/C
6. N/C
7. N/C
8. OSCILLATOR SUPPLY VOLTAGE (+)
9. DRIVE COIL GREEN
10. DRIVE COIL BLACK
11. POSITION OUTPUT (+)
12. AGC OUTPUT
13. OSCILLATOR SUPPLY VOLTAGE (COMMON)
14. N/C
15. N/C

CONTROLLED

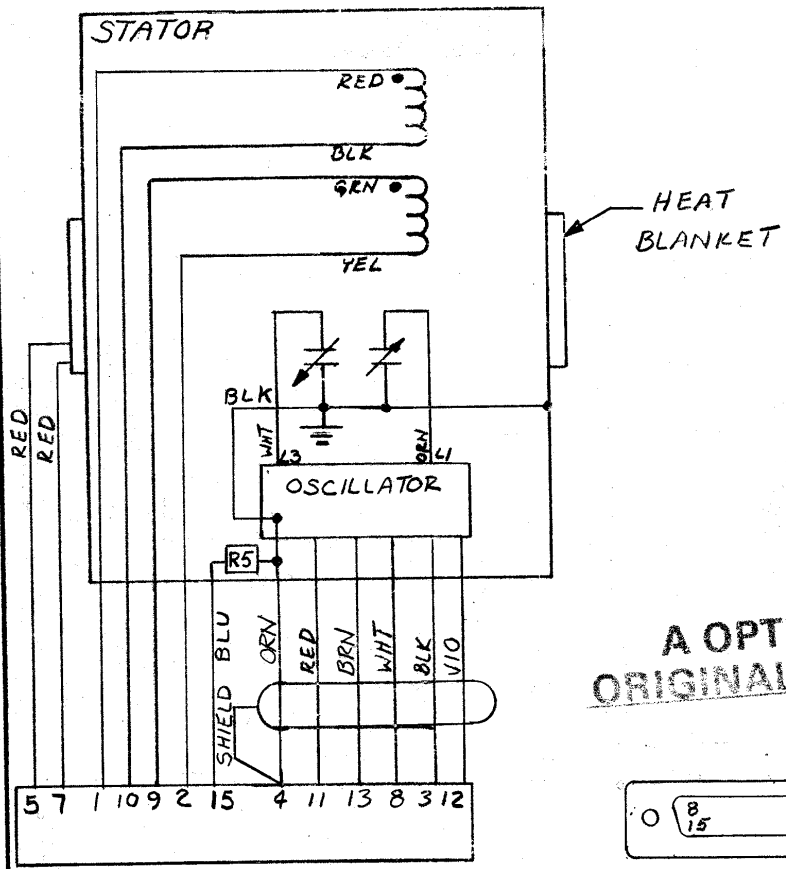
DOCUMENT



SOLDERABLE SIDE OF CONNECTOR SHOWN

A OPTICS ORIGINAL PRINT

MATERIAL				TREATMENT			
UNLESS SPECIFIED: DIMENSIONS ARE IN INCHES TOLERANCES: .XX = ±.01 .XXX = ±.005 .XXXX = ±.0010 ANG. = ±0°30' REMOVE ALL BURRS AND SHARP EDGES.	FUNCTION	NAME	DATE				
	ORIGINATOR						
	CHECKER						
	Q.A.						
	PROJ. ENG.						
SCALE	DATE 7/1/85	MFG. ENG.		TITLE		USED ON	
DRAWN W. Brinowicz		ENG. MGR.		WIRING DIAGRAM			
GENERAL SCANNING INCORPORATED WATERTOWN, MA.				SIZE A	DRAWING NUMBER 3WD-09128		REV. A



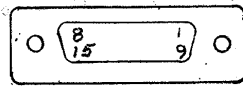
SYM	REVISION RECORD	DATE	APPVD.
A	RELEASED FOR PROD.	7/1/82	
B	PIN 8 WAS 14, CONNECTED VIA WIRE, ADDED ON COIL WINDING PER ECO 3587	4/22/83	ARC
C	REMOVED DETAIL FOR COIL CONFIG; ADDED CONN. PIN ASSIGNMENTS; ECO 4833	7-9-85	+Z

CONNECTOR PIN ASSIGNMENTS

1. DRIVE COIL RED
2. DRIVE COIL YELLOW
3. POSITION OUTPUT (-)
4. POSITION OUTPUT (COMMON)
5. HEATER BLANKET
6. N/C
7. HEATER BLANKET
8. OSCILLATOR SUPPLY VOLTAGE (+)
9. DRIVE COIL GREEN
10. DRIVE COIL BLACK
11. POSITION OUTPUT (+)
12. AGC OUTPUT
13. OSCILLATOR SUPPLY VOLTAGE (COMMON)
14. N/C
15. THERMISTOR

CONTROLLED DOCUMENT

A OPTICS ORIGINAL PRINT



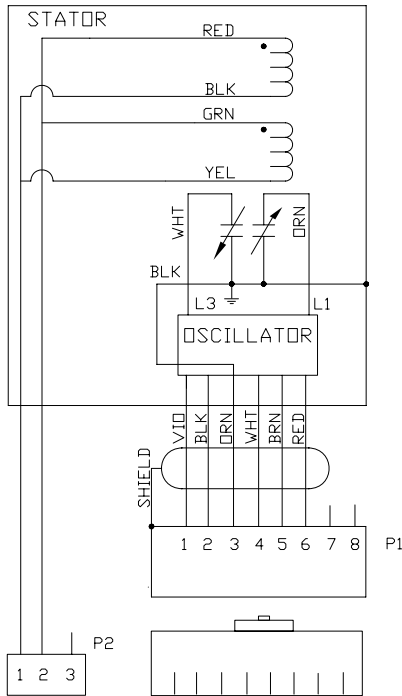
SOLDERABLE SIDE OF CONNECTOR SHOWN

PROPERTY OF GENERAL SCANNING

This document is and shall remain an unpublished work of General Scanning protected by copyright, is loaned for limited purposes only, remains the property of General Scanning, and is to be returned upon request. Neither it nor any of the information it contains will be reproduced, used or disclosed to anyone not having a need-to-know consistent with the purpose of the loan, without written consent of General Scanning.

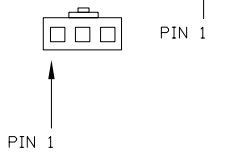
UNLESS OTHERWISE SPECIFIED DIMENSIONS ARE IN INCHES TOLERANCES DECIMAL ANGULAR XX ± .01 ± 0° 30' XXX ± .005	SCALE NONE	DATE 5/10/82				
	DRAWN GLEN TOBIASON					
REMOVE ALL BURRS AND SHARP EDGES	CHECKED		USED ON			
MATERIAL	APPROVED		TITLE WIRING DIAGRAM			
TREATMENT	APPROVED		GENERAL SCANNING INCORPORATED WATERTOWN MA		SIZE A	DRAWING NUMBER 3WD-06525
						REV C

REVISIONS				
ZONE	REV	DESCRIPTION	DATE	APPROVED
-	A	RELEASED TO PRODUCTION PER ECN 10929		
	B	REVISED PER ECN 980050		



CONNECTOR PIN ASSIGNMENTS

- P1
1. AGC IN
 2. POS-
 3. GND
 4. OSC PWR
 5. GND
 6. POS+
- P2
1. GALVO LOW
 2. GALVO HIGH
 3. NO CONNECTION



INTERPRET DRAWING IN ACCORDANCE WITH DOD-STD-100, ANSI Y14.5M-1994

PROPERTY OF GENERAL SCANNING
THIS DOCUMENT IS AND SHALL REMAIN AN UNPUBLISHED WORK OF GENERAL SCANNING PROTECTED BY COPYRIGHT. IS LOANED FOR LIMITED PURPOSES ONLY, REMAINS THE PROPERTY OF GENERAL SCANNING AND IS TO BE RETURNED UPON REQUEST. NEITHER IT NOR ANY OF THE INFORMATION IT CONTAINS BE REPRODUCED, USED, OR DISCLOSED TO ANYONE HAVING A NEED-TO-KNOW CONSISTENT WITH THE PURPOSE OF THE LOAN, WITHOUT WRITTEN CONSENT OF GENERAL SCANNING.

UNLESS OTHERWISE SPECIFIED: DIMENSIONS ARE IN INCHES TOLERANCES ARE:
.X ± .1
.XX ± .01
.XXX ± .005
.XXXX ± .0010
ANGLES ± .5°
DO NOT SCALE DRAWING REMOVE ALL BURRS AND BREAK SHARP EDGES
ALL MACH SURFACES 63
APPD
THIRD ANGLE PROJECTION

CONTRACT NO.	
DRAWN A. VALLEE	5/2/97
DESIGN ENGR J.W. KING	5/19/97
MFG D.C. BROWN	5/19/97
G.A. D. GOSSE	5/19/97
APPD	
APPD	
CAD FILE NAME 18345-0B	98.03.12/13:33

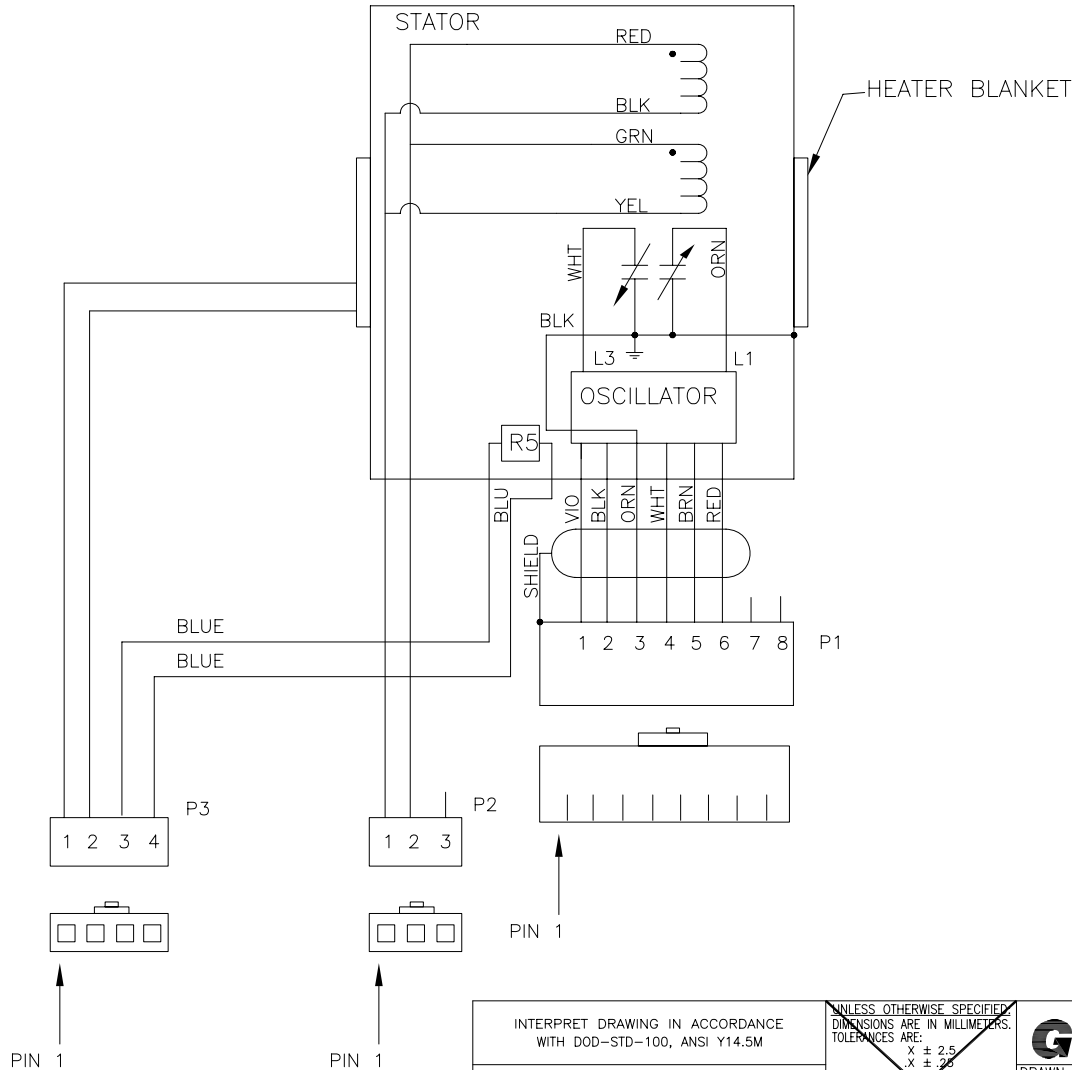
GENERAL SCANNING INC.
OPTICAL SCANNING PRODUCTS DIVISION
500 ARSENAL STREET, WATERTOWN, MA. 02172

WIRING DIAGRAM,
G1_DS SERIES

SIZE B	CAGE CODE 57246	DWG NO. 3WD-18345	REV B
SCALE NONE			SHEET 1 OF 1

NOTES:

1.



REVISIONS				
ZONE	REV	DESCRIPTION	DATE	APPROVED
-	A	RELEASED PER ECO #10929		
	B	REVISED PER ECN 980050		
	C	REVISED PER ECN 2003-194	8-11-03	D.O

CONNECTOR PIN ASSIGNMENTS

- P1
1. AGC IN
 2. POS-
 3. GND
 4. OSC PWR
 5. GND
 6. POS+
- P2
1. GALVO LOW
 2. GALVO HIGH
 3. NO CONNECTION
- P3
1. HEATER HIGH
 2. HEATER LOW
 3. THERMISTOR 1
 4. THERMISTOR 2

UNLESS OTHERWISE SPECIFIED:
 DIMENSIONS ARE IN INCHES
 TOLERANCES ARE:
 .X ± .1
 .XX ± .01
 .XXX ± .005
 .XXXX ± .0010
 ANGLES ± .5°
 DO NOT SCALE DRAWING
 REMOVE ALL BURRS AND BREAK
 SHARP EDGES 63/√
 ALL MACH SURFACES √

INTERPRET DRAWING IN ACCORDANCE WITH DOD-STD-100, ANSI Y14.5M

PROPERTY OF GSI LUMONICS
 THIS DOCUMENT IS AND SHALL REMAIN AN UNPUBLISHED WORK OF GSI LUMONICS PROTECTED BY COPYRIGHT, IS LOANED FOR LIMITED PURPOSES ONLY, REMAINS THE PROPERTY OF GSI LUMONICS, AND IS TO BE RETURNED UPON REQUEST. NEITHER IT NOR ANY OF THE INFORMATION IT CONTAINS WILL BE REPRODUCED, USED, OR DISCLOSED TO ANYONE NOT HAVING A NEED-TO-KNOW CONSISTENT WITH THE PURPOSE OF THE LOAN, WITHOUT WRITTEN CONSENT OF GSI LUMONICS.

UNLESS OTHERWISE SPECIFIED:
 DIMENSIONS ARE IN MILLIMETERS.
 TOLERANCES ARE:
 X ± 2.5
 .X ± .25
 .XX ± .13
 .XXX ± .025
 ANGLES ± .5°
 DO NOT SCALE DRAWING
 REMOVE ALL BURRS AND BREAK SHARP EDGES
 ALL MACHINED SURFACES 1.6 MICRON RA

THIRD ANGLE PROJECTION

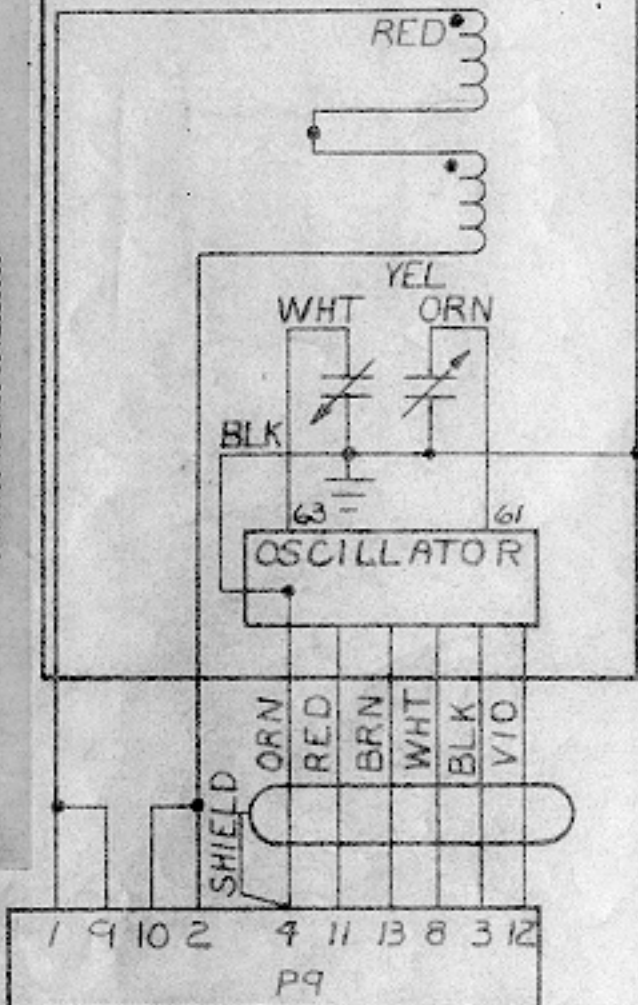
Gsi Lumonics COMPONENT PRODUCTS GROUP

WIRING DIAGRAM
 G120DTS

DRAWN A.L.	1-22-97	SIZE B	CAGE CODE 57246	DWG NO. 3WD-18198	REV C
DESIGN ENG D.BROWN	9-17-97	SCALE 1/1			SHEET 1 OF 1
MFG ENG T.GOSSE	5-19-97				

CAD FILE NAME:

STATOR

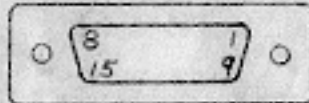


SYM	REVISION	RECORD	DATE	APPVD.
C	REDRAWN PER ECO 4641		3/8/85	JZ
D	REMOVED DETAIL 'A' ADDED CONN. ASSIGNMENTS	ECO 4833	7-9-85	JZ

CONNECTOR PIN ASSIGNMENTS

1. DRIVE COIL RED
2. DRIVE COIL YELLOW
3. POSITION OUTPUT (-)
4. POSITION OUTPUT (COMMON)
5. N/C
6. N/C
7. N/C
8. OSCILLATOR SUPPLY VOLTAGE (+)
9. DRIVE COIL RED
10. DRIVE COIL YELLOW
11. POSITION OUTPUT (+)
12. ABC OUTPUT
13. OSCILLATOR SUPPLY VOLTAGE (COMMON)
14. N/C
15. N/C

A OPTICS ORIGINAL PRINT

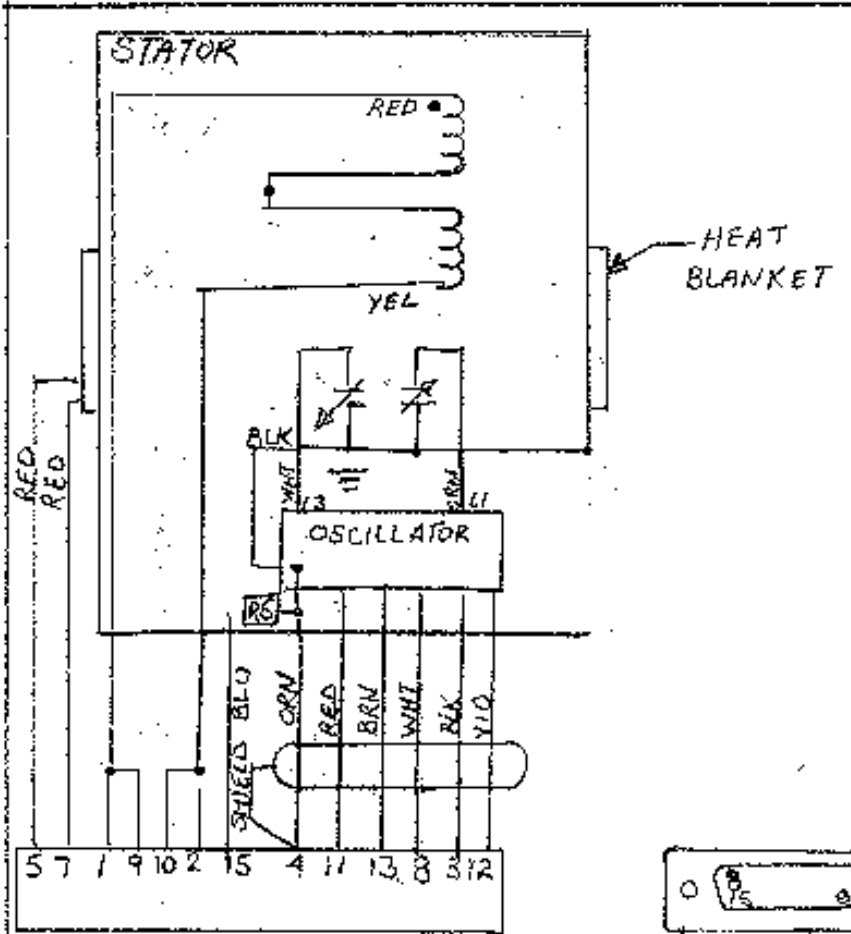


SOLDERABLE SIDE OF CONNECTOR SHOWN

CONTROLLED

DOCUMENT

MATERIAL			TREATMENT		
UNLESS SPECIFIED: DIMENSIONS ARE IN INCHES TOLERANCES: .XX = ± .01 .XXX = ± .005 .XXXX = ± .0010 ANG. = ± 0°30' REMOVE ALL BURRS AND SHARP EDGES.	FUNCTION	NAME	DATE		
	ORIGINATOR				
	CHECKER			USED ON	
	Q.A.			TITLE	
	PROJ. ENG.	<i>[Signature]</i>	1-28-85	WIRING DIAGRAM	
SCALE NONE	DATE 1-3-85	MFG. ENG.		GENERAL SCANNING	SIZE A
DRAWN D. BRADBURY	ENG. MGR. <i>[Signature]</i>	1/30/85		INCORPORATED WATERTOWN, MA.	DRAWING NUMBER 3WD-06524
					REV. D



SYM	REVISION RECORD	DATE	APP
A		9-7-84	
B	REVERSED 10 & 9 () PER ECO 4833	8-29-84	JZ
C	REVISED PER ECO 4691	8-8-85	JZ
D	REMOVED COIL CONF. DETAILS ADDED CONN. PIN ASSIGNMENTS ECO 4833	7-9-85	JZ

CONNECTOR PIN ASSIGNMENTS

1. DRIVE COIL RED
2. DRIVE COIL YELLOW
3. POSITION OUTPUT (-)
4. POSITION OUTPUT (COMMON)
5. HEATER BLANKET
6. N/C
7. HEATER BLANKET
8. OSCILLATOR SUPPLY VOLTAGE (+)
9. DRIVE COIL RED
10. DRIVE COIL YELLOW
11. POSITION OUTPUT (+)
12. ABC OUTPUT
13. OSCILLATOR SUPPLY VOLTAGE (-)
14. N/C
15. THERMISTOR

ORIGINAL PRINT
SOLDERABLE SIDE CONNECTOR SHOWN

PROPERTY OF GENERAL SCANNING

This document is and the design or uncopyrighted work of General Scanning provided by copyright, known or to be known, is the property of General Scanning, and it is to be controlled, stored, handled, and used only for the purposes of the contract of General Scanning, or to be used in any other way without the written consent of General Scanning.

UNLESS OTHERWISE SPECIFIED DIMENSIONS ARE IN INCHES TOLERANCES DECIMAL ANGULAR XX ± .01 ± 0° 20' XXX ± .005	SCALE DATE NONE 6-21-84				
	DRAWN DAVE BRADBURY				
REMOVE ALL BURRS AND SHARP EDGES	CHECK FOR 06-11-84 P. Macauliff				USED ON
MATERIAL	APPROVED P. Macauliff	TITLE WIRING DIAGRAM			
TREATMENT	APPROVED P. Macauliff	GENERAL SCANNING SIZE DRAWING INCORPORATED A 3WD-08042 D WATERTOWN, MA			