

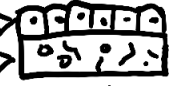
AREOLAR CONNECTIVE TISSUE

This is the most unspecialized, "generic" connective tissue -- compared to the other "connective tissues proper," it has the same components, but in a pretty even mixture:



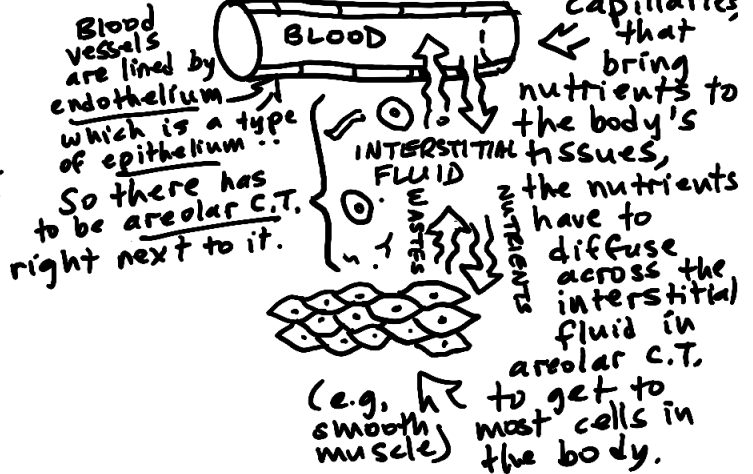
Two things make areolar C.T. extremely important:

① It forms the tissue layer next to all the epithelia in the body: EPITH. →



② It has a lot of water in its extracellular matrix. These things mean areolar C.T. plays a vital role in the exchange of materials:

Although it is the tiny blood vessels, known as capillaries that bring nutrients to the body's tissues,



MEMBRANES

We've studied various membranes - the plasma membrane around a cell, + the basement membrane under an epithelium.

The multicellular membranes generally consist of an epithelium plus its supporting connective tissue. Together they form a functional unit; since epithelia are avascular, they typically depend on the connective tissue for nutrients.

