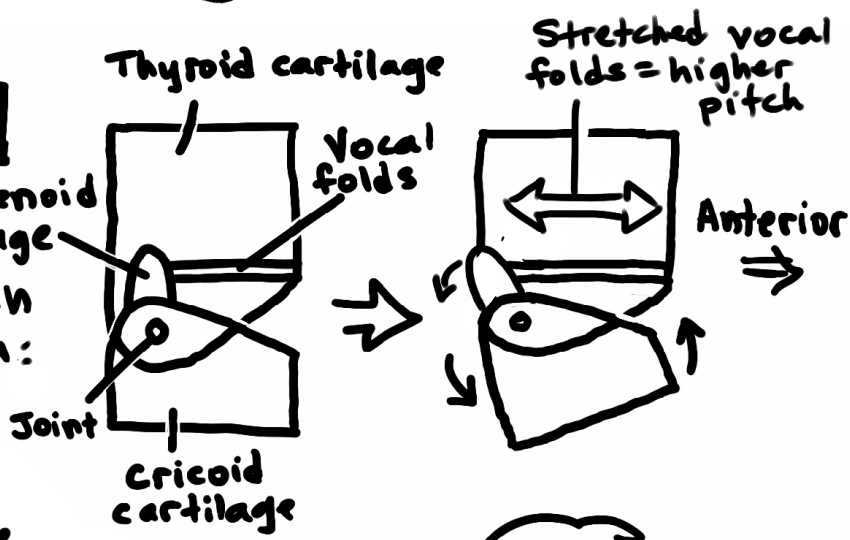


LARYNX

To speak in a high pitch:
Cricoid cartilage moves in sagittal plane

This moves the attached arytenoid cartilages posteriorly

This stretches the vocal folds

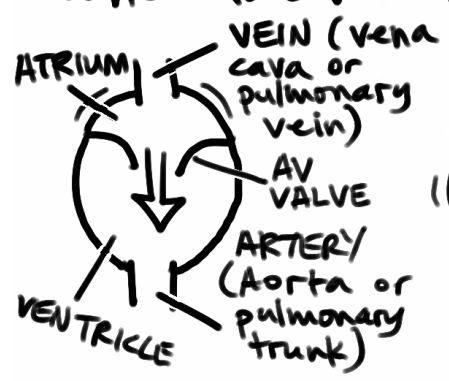


This increases tension, so vocal folds vibrate at higher pitch.

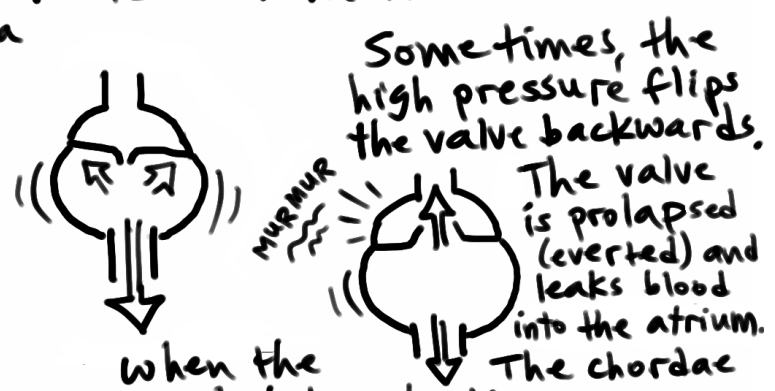


HEART VALVES

The atrioventricular (AV) valves prevent blood from flowing backward into the atria when the ventricles contract.



The valve opens when the atrium contracts, allowing blood to flow into the ventricle.



When the ventricle contracts, this raises the pressure of the blood inside it, which pushes the valve closed, so no blood enters the atrium.

