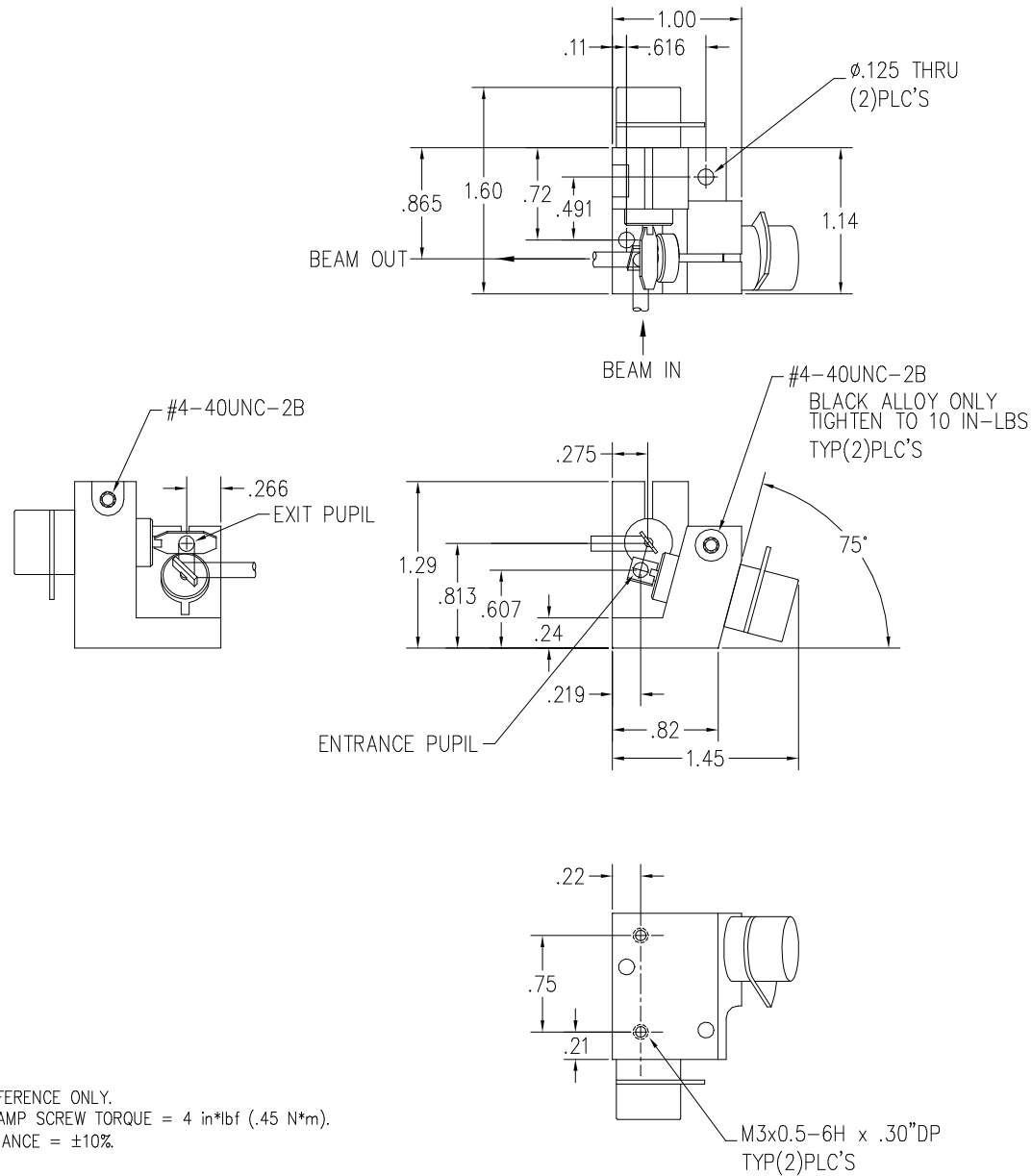


These drawings and specifications are the property of CAMBRIDGE TECHNOLOGY and shall not be reproduced, or copied, or used as the basis for the manufacture, or sale of apparatus without the written permission of CAMBRIDGE TECHNOLOGY, INC.

REVISION				
ECO	REV	DESCRIPTION	CHK	DATE
-	B	CHANGED OVER TO NEW CROSSPIN DESIGN	PTH	2/99
3435	C	NOTES 1+2 ADDED	PTH	5/06



NOTES:

1. ALL DIMENSIONS ARE FOR REFERENCE ONLY.
2. RECOMMENDED XY MOUNT CLAMP SCREW TORQUE = 4 in\*lb ( .45 N\*m).
3. CLAMP SCREW TORQUE TOLERANCE =  $\pm 10\%$ .

UNLESS OTHERWISE SPECIFIED	DRN	10/29/98	PTH	CAMBRIDGE TECHNOLOGY, INC.
TOLERANCES	DES			109 SMITH PLACE
.XX = $\pm 0.010$	CHK			CAMBRIDGE, MA 02138 - USA
.XXX = $\pm 0.005$	ENG			6200 XY INTERFACE RH
( ) INDICATES mm	APPR			3mm $\pm 15$ MECH
ANGLES: 0°-30°	PROJECTION			
SURFACE ROUGHNESS $63 \sqrt{\quad}$	REVISION			D03704
BREAK ALL SHARP EDGES	FINISH			SCALE : 2x
MATERIAL	USED ON	C		SHEET 1 OF 1